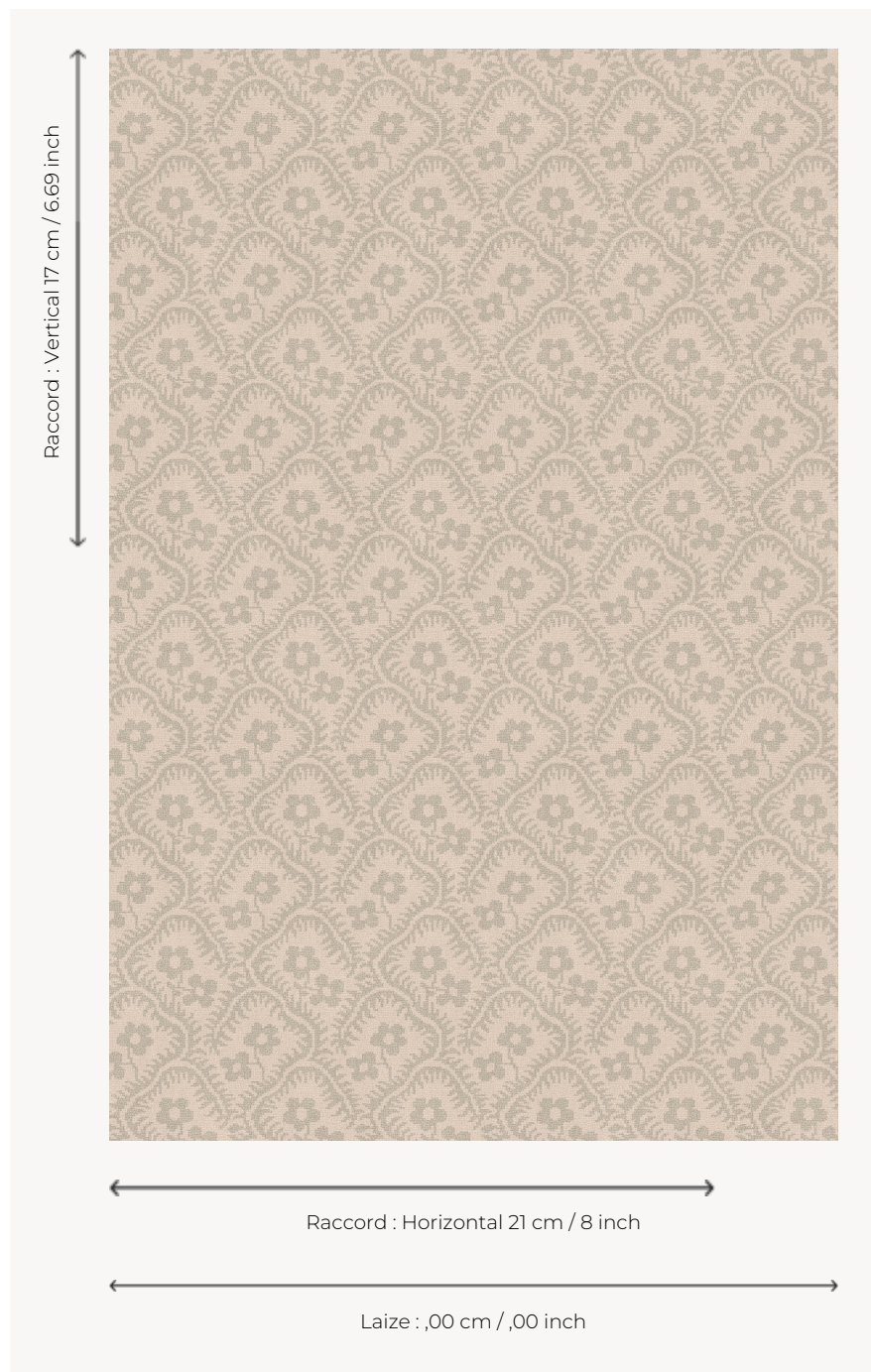


## FT522002 CHARMILLE

This charming two-tone floral pattern made in Axminster Fast-track is available in three colors, from the most natural to the most contemporary. The wide-width quality is particularly suitable for heavy traffic and staircases.

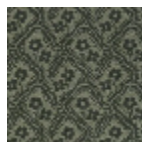
### FT522002 - SABLE



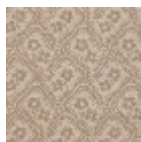
### Pierre Frey

<b>PERFORMANCE</b>	TRAFIC INTENSE - NON FEU
<b>FAMILY</b>	Carpet
<b>TECHNIQUE</b>	Fast-Track woven Axminster
<b>USE</b>	Intensive traffic Stairs
<b>COMPOSITION</b>	80 % Wool - 20 % Polyamide
<b>PILE</b>	Cut pile
<b>ASPECT</b>	Mat
<b>REPEAT</b>	H: 21 cm - 8,00 inch V: 17 cm - 6,69 inch Straight repeat
<b>NUMBER OF COLORS</b>	2
<b>PILE HEIGHT</b>	7.40 mm 0.29 inch
<b>TOTAL HEIGHT</b>	10.10 mm 0.39 inch
<b>TOTAL WEIGHT</b>	7.18 oz/ft <sup>2</sup>
<b>NOTES</b>	Fire retardant Heavy traffic Large width
<b>INFORMATION</b>	Production tolerance +/- 3 to 5% Natural irregularities Natural peeling

## 3 Colors



FT522001  
PRAIRIE



FT522002  
SABLE



FT522003  
CAMEL