

FT522003 CHARMILLE

This charming two-tone floral pattern made in Axminster Fast-track is available in three colors, from the most natural to the most contemporary. The wide-width quality is particularly suitable for heavy traffic and staircases.

FT522003 - CAMEL

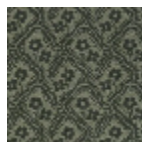


Raccord : Horizontal 21 cm / 8 inch

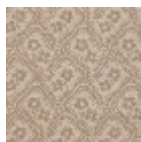
Pierre Frey

PERFORMANCE	TRAFIC INTENSE - NON FEU
FAMILY	Carpet
TECHNIQUE	Fast-Track woven Axminster
USE	Intensive traffic Stairs
COMPOSITION	80 % Wool - 20 % Polyamide
PILE	Cut pile
ASPECT	Mat
REPEAT	H: 21 cm - 8,00 inch V: 17 cm - 6,69 inch Straight repeat
NUMBER OF COLORS	2
PILE HEIGHT	7.40 mm 0.29 inch
TOTAL HEIGHT	10.10 mm 0.39 inch
TOTAL WEIGHT	7.18 oz/ft ²
NOTES	Fire retardant Heavy traffic Large width
INFORMATION	Production tolerance +/- 3 to 5% Natural irregularities Natural peeling

3 Colors



FT522001
PRAIRIE



FT522002
SABLE



FT522003
CAMEL