

## FT523003 AMARANTE

AMARANTE represents a lush and flowering vegetation. It is available in three colors in Axminster Fast-track, both multicolored and radiant. It is a wide-width quality, particularly suitable for heavy traffic and staircases.

### FT523003 - PRINTEMPS

Raccord : Vertical 100 cm / 39,37 inch



Raccord : Horizontal 75 cm / 29 inch

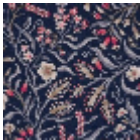
### Pierre Frey

PERFORMANCE	TRAFFIC INTENSE - NON FEU
FAMILY	Carpets
TECHNIQUE	Fast-Track woven Axminster
USE	Intensive traffic Stairs
COMPOSITION	80 % Wool - 20 % Polyamide
PILE	Cut pile
ASPECT	Mat
REPEAT	H: 75 cm - 29,00 inch V: 100 cm - 39,37 inch
NUMBER OF COLORS	9
PILE HEIGHT	7.40 mm 0.29 inch
TOTAL HEIGHT	10.10 mm 0.39 inch
TOTAL WEIGHT	7.18 oz/ft²
NOTES	Fire retardant Heavy traffic Large width
INFORMATION	Production tolerance +/- 3 to 5% Natural irregularities Natural peeling

3 Colors



FT523001  
BRUME



FT523002  
MINUIT



FT523003  
PRINTEMPS