

## FT524002 PETIT ABELIA

PETIT ABELIA is a lush green design created using Axminster Fast-track technique in shades of green, blue, and taupe, which give the pattern its depth. This wide-width carpet is particularly suitable for high-traffic areas and staircases.

### FT524002 - MARINE

Raccord : Vertical 134 cm / 52.75 inch

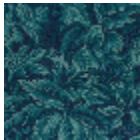


Raccord : Horizontal 102 cm / 40 inch

### Pierre Frey

|                         |   |
|-------------------------|---|
| <b>PERFORMANCE</b>      | TRAFIC INTENSE - NON FEU  |
| <b>FAMILY</b>           | Carpet  |
| <b>TECHNIQUE</b>        | Fast-Track woven Axminster  |
| <b>USE</b>              | Intensive traffic<br>Stairs   |
| <b>COMPOSITION</b>      | 80 % Wool - 20 % Polyamide  |
| <b>PILE</b>             | Cut pile  |
| <b>ASPECT</b>           | Mat   |
| <b>REPEAT</b>           | H: 102 cm - 40,00 inch<br>V: 134 cm - 52,75 inch<br>Straight repeat           |
| <b>NUMBER OF COLORS</b> | 4   |
| <b>PILE HEIGHT</b>      | 7.40 mm<br>0.29 inch  |
| <b>TOTAL HEIGHT</b>     | 10.10 mm<br>0.39 inch   |
| <b>TOTAL WEIGHT</b>     | 7.18 oz/ft <sup>2</sup>   |
| <b>NOTES</b>            | Fire retardant<br>Heavy traffic<br>Large width                                |
| <b>INFORMATION</b>      | Production tolerance +/- 3 to 5%<br>Natural irregularities<br>Natural peeling |

3 Colors



FT524001  
FORÊT



FT524002  
MARINE



FT524003  
TAUPE