

FT524003 PETIT ABELIA

PETIT ABELIA is a lush green design created using Axminster Fast-track technique in shades of green, blue, and taupe, which give the pattern its depth. This wide-width carpet is particularly suitable for high-traffic areas and staircases.

FT524003 - TAUPE

Raccord : Vertical 134 cm / 52.75 inch

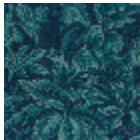


Raccord : Horizontal 102 cm / 40 inch

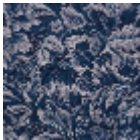
Pierre Frey

PERFORMANCE	TRAFIC INTENSE - NON FEU
FAMILY	Carpet
TECHNIQUE	Fast-Track woven Axminster
USE	Intensive traffic Stairs
COMPOSITION	80 % Wool - 20 % Polyamide
PILE	Cut pile
ASPECT	Mat
REPEAT	H: 102 cm - 40,00 inch V: 134 cm - 52,75 inch Straight repeat
NUMBER OF COLORS	4
PILE HEIGHT	7.40 mm 0.29 inch
TOTAL HEIGHT	10.10 mm 0.39 inch
TOTAL WEIGHT	7.18 oz/ft ²
NOTES	Fire retardant Heavy traffic Large width
INFORMATION	Production tolerance +/- 3 to 5% Natural irregularities Natural peeling

3 Colors



FT524001
FORÊT



FT524002
MARINE



FT524003
TAUPE