

FT526002 MALVA

MALVA is a seedling of multicolored and cheerful flowers in Axminster Fast-track. Developed in two colors, this archive design looks just as beautiful on a dark background as it does on a light one. With its wide width, it is particularly suitable for high-traffic areas and staircases.

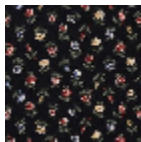
FT526002 - NATUREL



Pierre Frey

| | |
|-------------------------|---|
| PERFORMANCE | TRAFIC INTENSE - NON FEU |
| FAMILY | Carpet |
| TECHNIQUE | Fast-Track woven Axminster |
| USE | Intensive traffic Stairs |
| COMPOSITION | 80 % Wool - 20 % Polyamide |
| PILE | Cut pile |
| ASPECT | Mat |
| REPEAT | H: 33 cm - 12,00 inch V: 50 cm - 19,68 inch Straight repeat |
| NUMBER OF COLORS | 10 |
| PILE HEIGHT | 7.40 mm 0.29 inch |
| TOTAL HEIGHT | 10.10 mm 0.39 inch |
| TOTAL WEIGHT | 7.18 oz/ft ² |
| NOTES | Fire retardant Heavy traffic Large width |
| INFORMATION | Production tolerance +/- 3 to 5% Natural irregularities Natural peeling |

2 Colors



FT526001
JAIS



FT526002
NATUREL