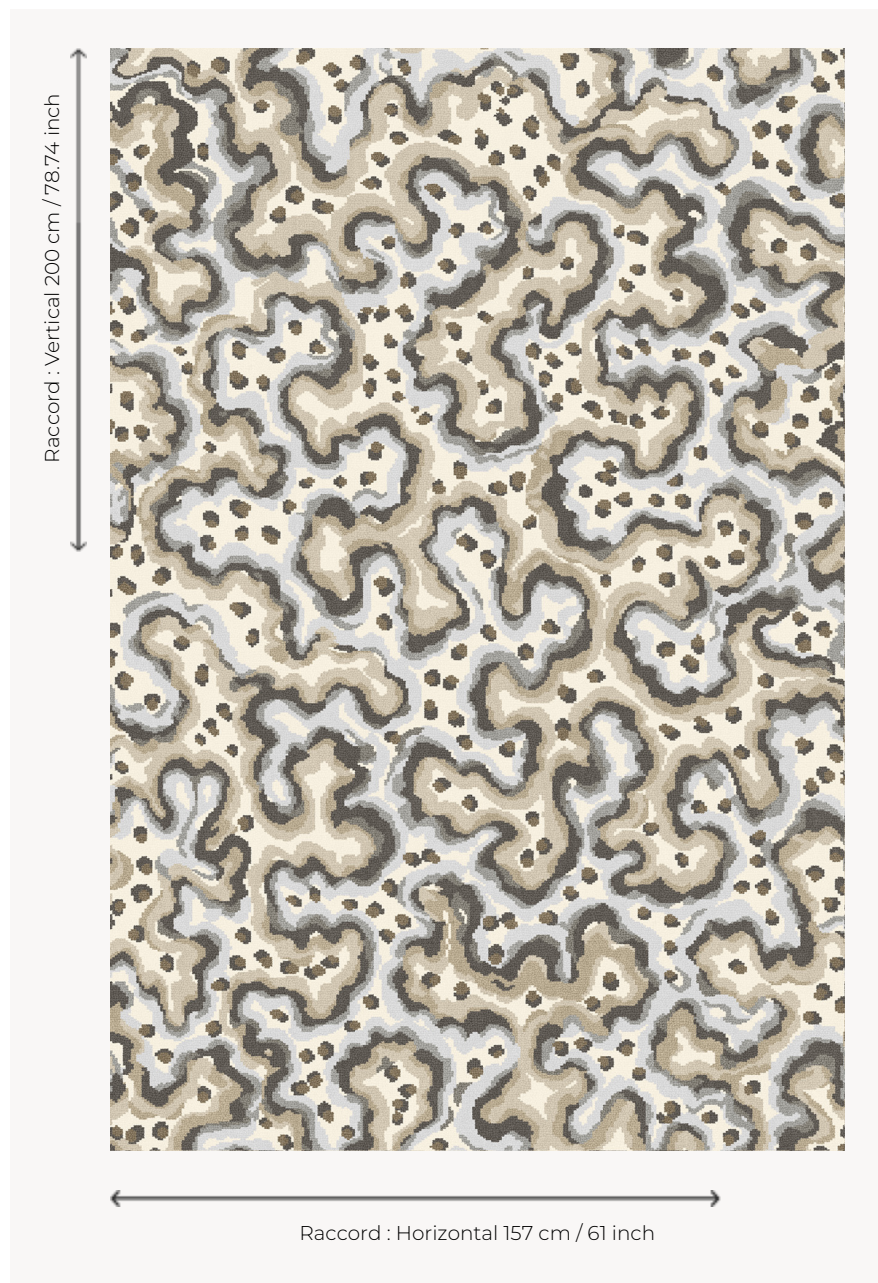


FT539001 SINULARIA

A pattern resembling moss seen up close, seaweed, a plant world that Isabelle de Borchgrave is particularly fond of. It is a pattern that lies somewhere between abstraction and nature: its density creates a living, almost tactile material. A fabric of life, painted with instinct and finesse. Its adaptation into wide-width Axminster Fast-track carpet perfectly captures this organic and intense spirit. A quality particularly suited to heavy traffic and staircases.

FT539001 - NATUREL



Pierre Frey

PERFORMANCE	TRAFIC INTENSE - NON FEU
FAMILY	Carpet
ARTIST	Isabelle De Borchgrave
TECHNIQUE	Fast-Track woven Axminster
USE	Intensive traffic Stairs
COMPOSITION	80 % Wool - 20 % Polyamide
PILE	Cut pile
ASPECT	Mat
REPEAT	H: 157 cm - 61,00 inch V: 200 cm - 78,74 inch Straight repeat
NUMBER OF COLORS	8
PILE HEIGHT	7.40 mm 0.29 inch
TOTAL HEIGHT	10.10 mm 0.39 inch
TOTAL WEIGHT	7.18 oz/ft²
NOTES	Fire retardant Heavy traffic Large width
INFORMATION	Production tolerance +/- 3 to 5% Natural irregularities Natural peeling

1 Colors



FT539001
NATUREL