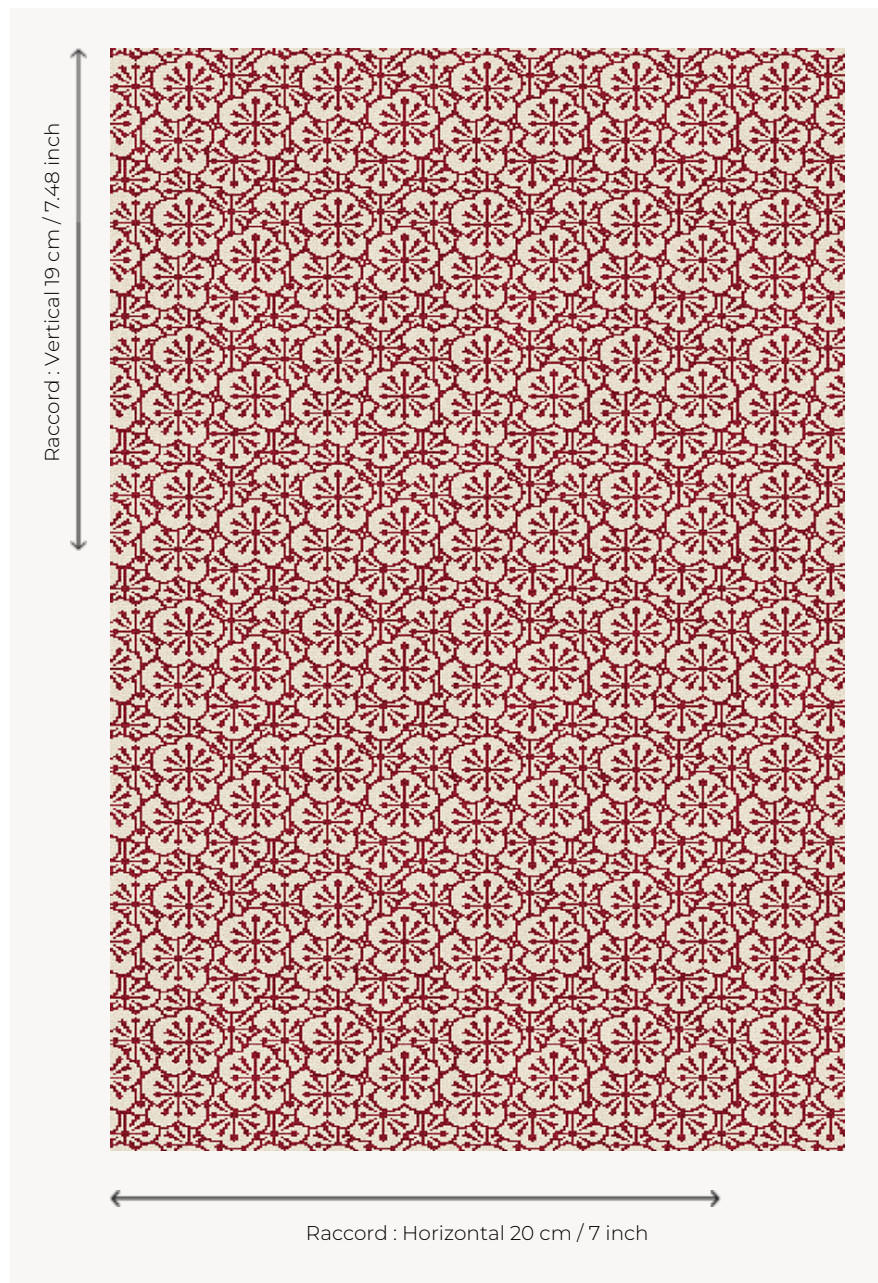


LT109001 POMMIERS

Japanese influence for this pattern created around 1937 by Armand-Albert Rateau, a great decorator of the first half of the 20th century. Axminster woven carpet.

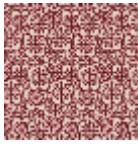
LT109001 - Coquelicot



Le manach

PERFORMANCE	TRAFIC INTENSE - NON FEU
FAMILY	Carpet
TECHNIQUE	Fast-Track woven Axminster
USE	Intensive traffic
COMPOSITION	80 % Wool - 20 % Polyamide
DENSITY	7x10
PILE	Cut pile
ASPECT	Mat
REPEAT	H: 20 cm - 7,00 inch V: 19 cm - 7,48 inch Straight repeat
NUMBER OF COLORS	2
PILE HEIGHT	7.30 mm 0.29 inch
TOTAL HEIGHT	10.00 mm 0.39 inch
TOTAL WEIGHT	7.06 oz/ft ²
CERTIFICATIONS	Passé
NOTES	Fire retardant Heavy traffic Large width
INFORMATION	Production tolerance +/- 3 to 5% Natural peeling

5 Colors



LT109001
Coquelicot



LT109002
Vert



LT109003
Noir/blanc

LT109_AX_00F
T

LT109_FT_0021