

## LT117001 BEHANZIN WILTON

Reproduction in Wilton weaving of the pattern of a Kuba velvet from Congo, so called because of the use of looped raffia threads, a distant reminiscence of the loops found in Italian velvets.

LT117001 - Camel

Le manach

Raccord : Vertical 42 cm / 16.53 inch

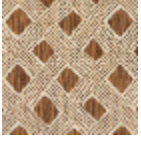


Raccord : Horizontal 70 cm / 27 inch



<b>PERFORMANCE</b>	NON FEU
<b>FAMILY</b>	Carpet
<b>TECHNIQUE</b>	Woven Wilton
<b>USE</b>	Moderate traffic Stairs
<b>COMPOSITION</b>	80 % Carded Wool - 20 % Polyamide
<b>PILE</b>	Cut pile
<b>ASPECT</b>	Mat
<b>REPEAT</b>	H: 70 cm - 27,00 inch V: 42 cm - 16,53 inch Straight repeat
<b>NUMBER OF COLORS</b>	3
<b>PILE HEIGHT</b>	5.40 mm 0.21 inch
<b>TOTAL HEIGHT</b>	8.00 mm 0.31 inch
<b>TOTAL WEIGHT</b>	7.47 oz/ft <sup>2</sup>
<b>CERTIFICATIONS</b>	Passé
<b>NOTES</b>	Fire retardant
<b>INFORMATION</b>	Production tolerance +/- 3 to 5% Natural irregularities Natural peeling No sampling

# 1 Colors



LT117001  
Camel