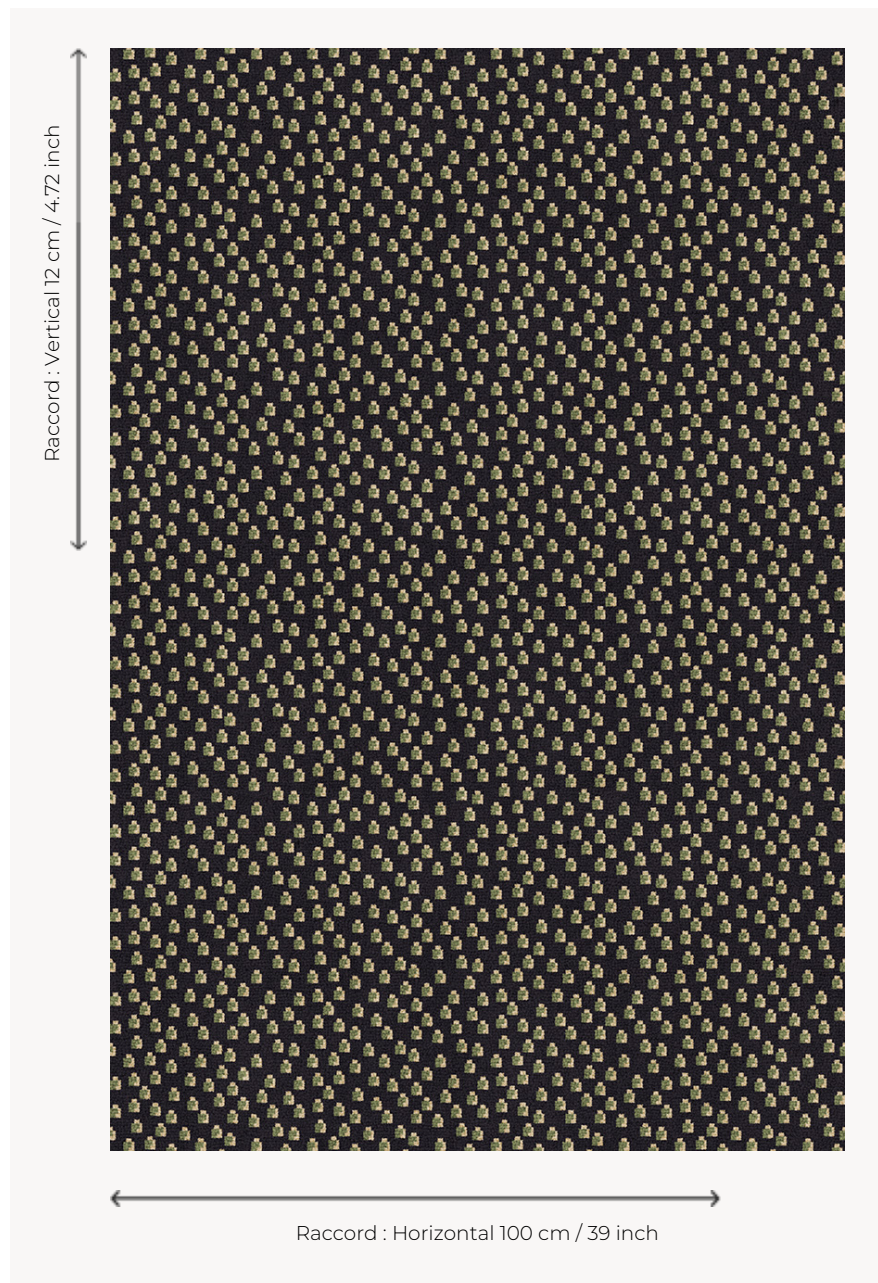


## LT128002 TOILE AFRICAINE

Axminster woven carpet adaptation of a toile de Tours presenting a modernist inspiration in the spirit of the Wiener Werkstätte.

### LT128002 - Noir/vert



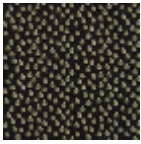
### Le manach

|                         |   |
|-------------------------|---|
| <b>PERFORMANCE</b>      | TRAFIC INTENSE - NON FEU  |
| <b>FAMILY</b>           | Carpet  |
| <b>TECHNIQUE</b>        | Fast-Track woven Axminster  |
| <b>USE</b>              | Intensive traffic   |
| <b>COMPOSITION</b>      | 80 % Wool - 20 % Polyamide  |
| <b>DENSITY</b>          | 7x10  |
| <b>PILE</b>             | Cut pile  |
| <b>ASPECT</b>           | Mat   |
| <b>REPEAT</b>           | H: 100 cm - 39,00 inch<br>V: 12 cm - 4,72 inch<br>Straight repeat |
| <b>NUMBER OF COLORS</b> | 3   |
| <b>PILE HEIGHT</b>      | 7.40 mm<br>0.29 inch  |
| <b>TOTAL HEIGHT</b>     | 10.10 mm<br>0.39 inch   |
| <b>TOTAL WEIGHT</b>     | 7.18 oz/ft <sup>2</sup>   |
| <b>CERTIFICATIONS</b>   | Passé   |
| <b>NOTES</b>            | Fire retardant<br>Heavy traffic<br>Large width                    |
| <b>INFORMATION</b>      | Production tolerance +/- 3 to 5%<br>Natural peeling               |

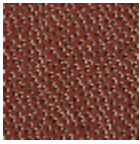
## 4 Colors



LT128001  
Gris



LT128002  
Noir/vert



LT128003  
Rouge

LT128\_FT\_0010