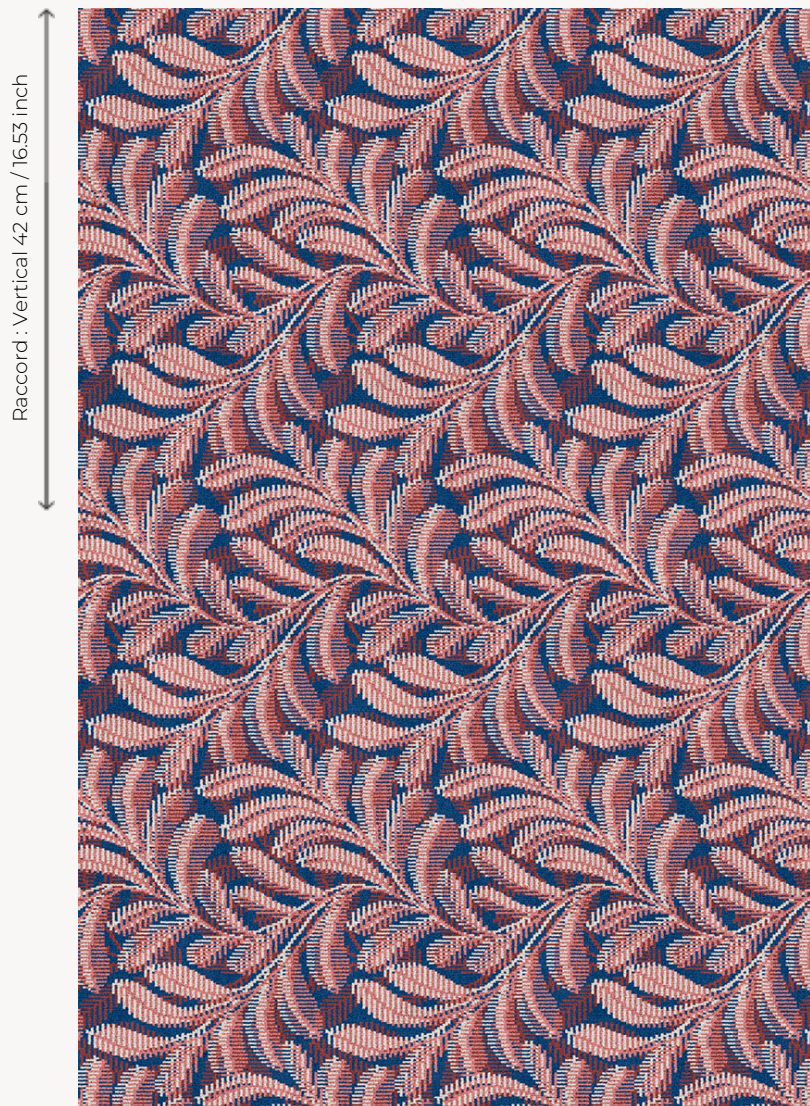


## OT113003 WINDS

With its vibrant graphic that evokes the wind passing through the tree canopy, this four-colored carpet offers a contemporary alternative to traditional plant motifs.

### OT113003 - Cerise



Raccord : Vertical 42 cm / 16.53 inch

Raccord : Horizontal 33 cm / 12 inch

Laize : 400,00 cm / 157,48 inch

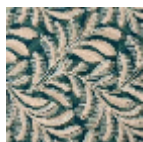
### Boussac

<b>PERFORMANCE</b>	TRAFIC INTENSE - NON FEU
<b>FAMILY</b>	Carpet
<b>TECHNIQUE</b>	Woven Axminster
<b>USE</b>	Intensive traffic
<b>COMPOSITION</b>	80 % Wool - 20 % Polyamide
<b>DENSITY</b>	7x10
<b>PILE</b>	Cut pile
<b>ASPECT</b>	Mat
<b>WIDTH</b>	400 cm / 157,48 inch
<b>REPEAT</b>	H: 33 cm - 12,00 inch V: 42 cm - 16,53 inch Straight repeat
<b>NUMBER OF COLORS</b>	4
<b>PILE HEIGHT</b>	7.40 mm 0.29 inch
<b>TOTAL HEIGHT</b>	10.10 mm 0.39 inch
<b>TOTAL WEIGHT</b>	7.18 oz/ft <sup>2</sup>
<b>CERTIFICATIONS</b>	Passé
<b>NOTES</b>	Fire retardant Heavy traffic Large width
<b>INFORMATION</b>	Production tolerance +/- 3 to 5% Natural peeling

## 3 Colors



OT113001  
Anthracite



OT113002  
CYPRES



OT113003  
Cerise