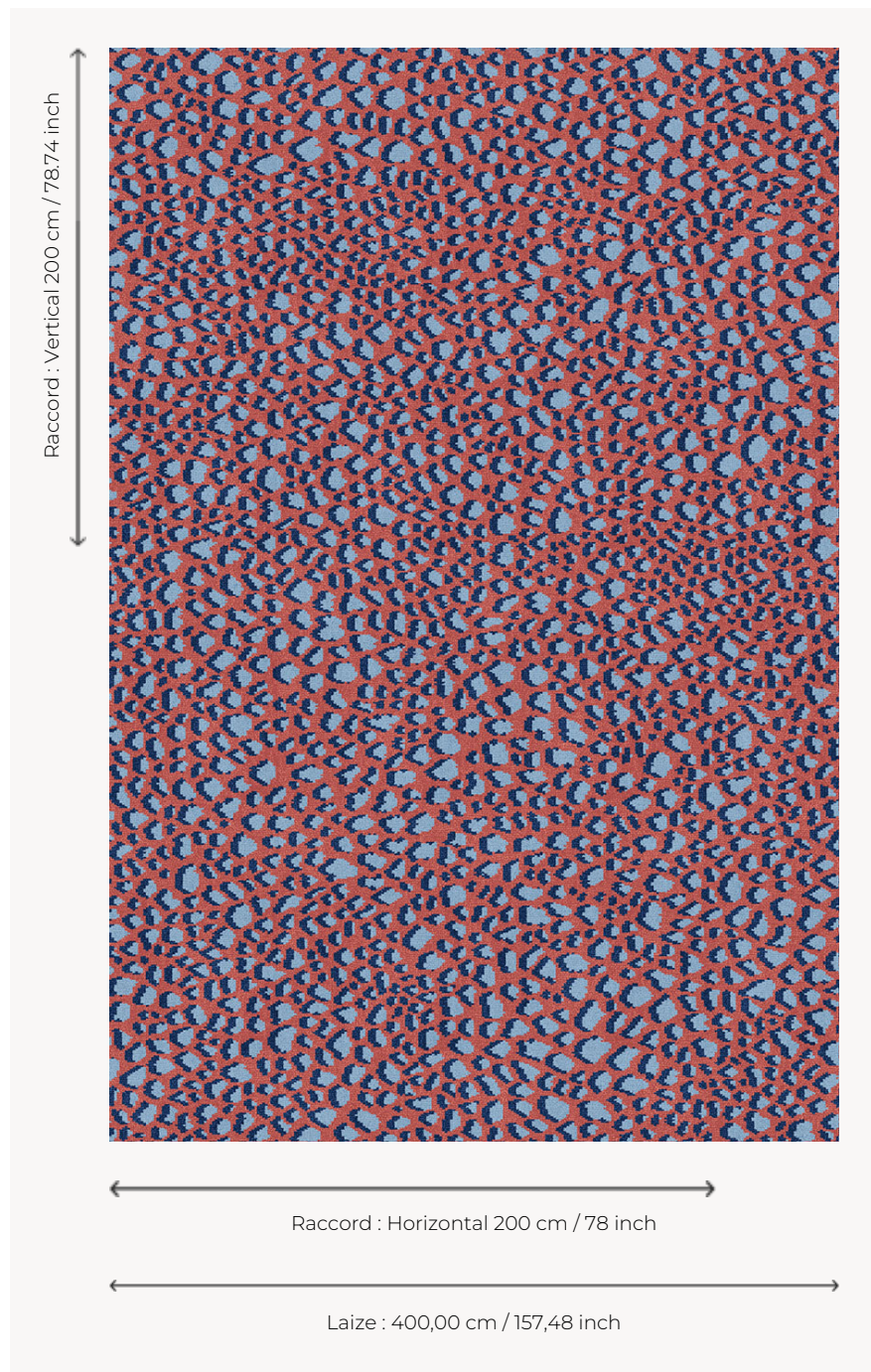


## OT114003 EARTH

Halfway between the organic and the living, this delicate all-over graphic creates an original and contemporary three-colored carpet.

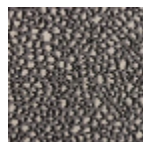
### OT114003 - Framboise



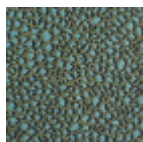
### Boussac

<b>PERFORMANCE</b>	TRAFIC INTENSE - NON FEU
<b>FAMILY</b>	Carpet
<b>TECHNIQUE</b>	Woven Axminster
<b>USE</b>	Intensive traffic
<b>COMPOSITION</b>	80 % Wool - 20 % Polyamide
<b>DENSITY</b>	7x10
<b>PILE</b>	Cut pile
<b>ASPECT</b>	Mat
<b>WIDTH</b>	400 cm / 157,48 inch
<b>REPEAT</b>	H: 200 cm - 78,00 inch V: 200 cm - 78,74 inch Straight repeat
<b>NUMBER OF COLORS</b>	3
<b>PILE HEIGHT</b>	7.50 mm 0.30 inch
<b>TOTAL HEIGHT</b>	10.20 mm 0.40 inch
<b>TOTAL WEIGHT</b>	7.79 oz/ft <sup>2</sup>
<b>CERTIFICATIONS</b>	Passé
<b>NOTES</b>	Fire retardant Heavy traffic Large width
<b>INFORMATION</b>	Production tolerance +/- 3 to 5% Natural peeling

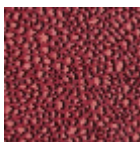
## 3 Colors



OT114001  
Anthracite



OT114002  
CYPRES



OT114003  
Framboise