

B1819004 BOUGIVAL - TOILE

Pattern of undulating branches decorated with exotic flowers characteristic of the second half of the 19th century, inspired by the Indian trees of life of the previous century.

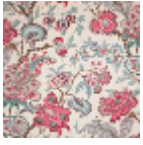
B1819004 - Santal



Braquenié

TYPE	Prints
COMPOSITION	100 % Cotton
SALES UNIT	Available per meter/yard
WIDTH	148 cm / 58,26 inch
REPEAT	V: 76 cm - 29,92 inch
WEIGHT	201 gr / ml
CARE	
NOTES	Made in France (EPV Living Heritage Mill)

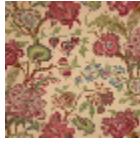
5 Colors



B1819001
Original



B1819002
Vanille



B1819004
Santal

B1819000
Support toile
bougival

B1819302
Ypolyestertrevi
racsvanill