

## B7532001 MADAME DE SEVIGNE

This design with a motif of sinuous branches in bloom characteristic of the 19th century is inspired from 18th century Indian trees of life. The choice of silk for this magnificent jacquard reflects the refinement and elegance of the silks of yesteryear. This design, inspired from an 18th century palampore, is a 100% silk woven jacquard representing large leaves and stylised flowers alternately along strong stems laid out in an arabesque manner.

### B7532001 - Mordore

Raccord : Vertical 80 cm / 31.49 inch

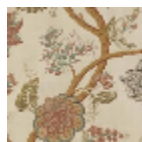


Laize : 137,00 cm / 53,93 inch

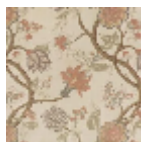
### Braquenié

<b>TYPE</b>	Jacquards - Silks & Silky effect fabrics
<b>USE</b>	Curtain
<b>COMPOSITION</b>	100 % Silk
<b>SALES UNIT</b>	Available per meter/yard
<b>WIDTH</b>	137 cm / 53,93 inch
<b>REPEAT</b>	V: 80 cm - 31,49 inch
<b>WEIGHT</b>	319 gr / ml
<b>CARE</b>	

## 2 Colors



B7532001  
Mordore



B7532002  
Bleu ancien