

B7532002 MADAME DE SEVIGNE

This design with a motif of sinuous branches in bloom characteristic of the 19th century is inspired from 18th century Indian trees of life. The choice of silk for this magnificent jacquard reflects the refinement and elegance of the silks of yesteryear. This design, inspired from an 18th century palampore, is a 100% silk woven jacquard representing large leaves and stylised flowers alternately along strong stems laid out in an arabesque manner.

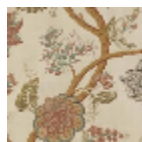
B7532002 - Bleu ancien



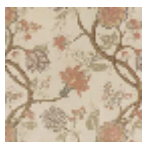
Braquenié

TYPE	Jacquards - Silks & Silky effect fabrics
USE	Curtain
COMPOSITION	100 % Silk
SALES UNIT	Available per meter/yard
WIDTH	137 cm / 53,93 inch
REPEAT	V: 80 cm - 31,49 inch
WEIGHT	319 gr / ml
CARE	

2 Colors



B7532001
Mordore



B7532002
Bleu ancien