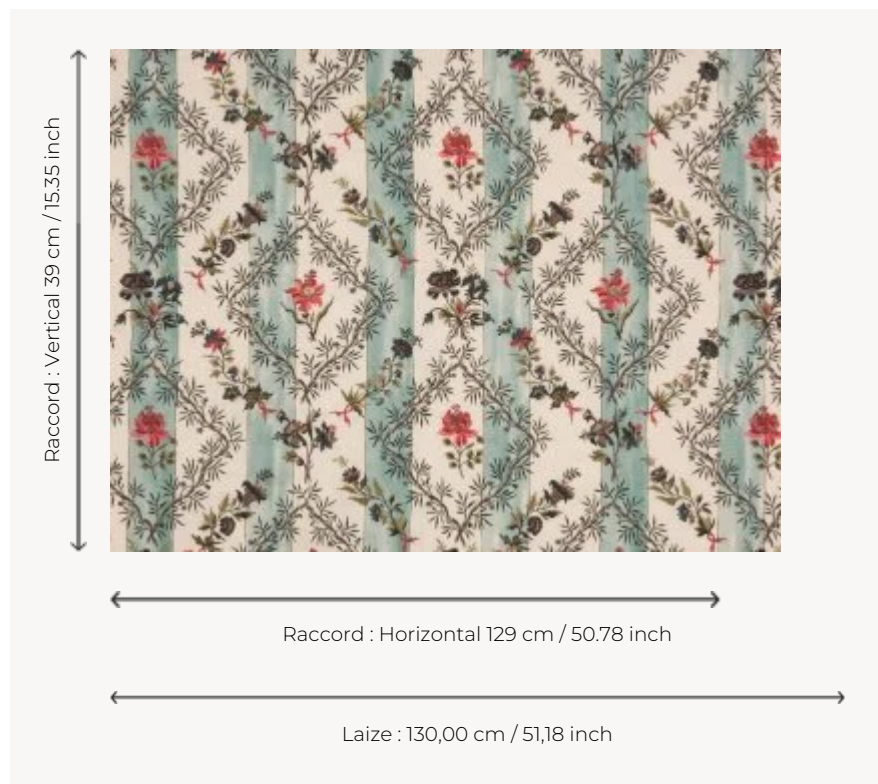


B7581001 CANDIDE

Candide is the embroidered version of a printed and painted Indienne of the 18th century from our archives. The particularity of this design resides in the fact that the ground is actually a printed stripe, a detail which was very appreciated in Europe during the second half of the 18th Century. This leads us to believe that this particular Indienne was actually designed for the European market.

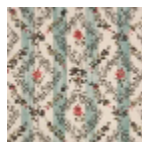
B7581001 - Multicolore



Braquenié

TYPE	Embroideries - Prints
USE	Curtain
COMPOSITION	70 % Linen - 30 % Viscose
SALES UNIT	Available per meter/yard
WIDTH	130 cm / 51,18 inch
REPEAT	H: 129 cm - 50,78 inch V: 39 cm - 15,35 inch
WEIGHT	429 gr / ml
CARE	

1 Colors



B7581001

Multicolore