

B7596001 JARDIN D'HIVER

Where print becomes embroidery! We took, from our archives, a pattern composed of exotic flowers which was printed on cotton around 1860 and transposed into multi-coloured embroidery on cotton satin. The black background was particularly popular during the Second Empire.

B7596001 - Multicolore



Raccord : Vertical 38 cm / 14.96 inch

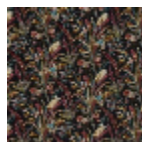
Raccord : Horizontal 63 cm / 24.80 inch

Laize : 127,00 cm / 50,00 inch

Braquenié

TYPE	Embroideries
COMPOSITION	75 % Cotton - 25 % Viscose
SALES UNIT	Available per meter/yard
WIDTH	127 cm / 50,00 inch
REPEAT	H: 63 cm - 24,80 inch V: 38 cm - 14,96 inch
WEIGHT	533 gr / ml
CARE	

1 Colors



B7596001
Multicolore