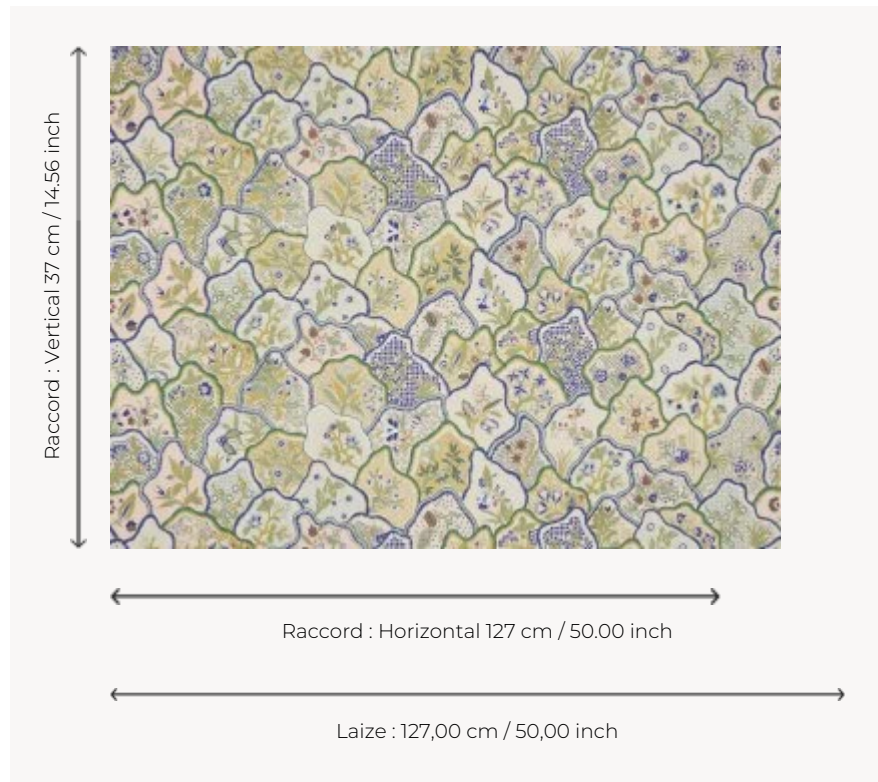


## B7624001 LES FLEURS DU BENGALE

Inspired by an emblematic 19th century printed Braquenié fabric known as "Toiles des Indes", this embroidered linen mirrors the traditional composition with its intertwined scales and flowered pattern.

### B7624001 - Mistral



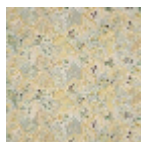
### Braquenié

|                    |                                                                    |
|--------------------|--------------------------------------------------------------------|
| <b>TYPE</b>        | Embroideries                                                       |
| <b>USE</b>         | Curtain                                                            |
| <b>COMPOSITION</b> | 63 % Linen - 37 % Viscose                                          |
| <b>SALES UNIT</b>  | Available per meter/yard                                           |
| <b>WIDTH</b>       | 127 cm / 50,00 inch                                                |
| <b>REPEAT</b>      | H: 127 cm - 50,00 inch<br>V: 37 cm - 14,56 inch<br>Straight repeat |
| <b>WEIGHT</b>      | 622 gr / ml                                                        |
| <b>CARE</b>        |                                                                    |
| <b>BOOK</b>        | B99791904                                                          |

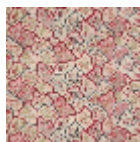
## 3 Colors



B7624001  
Mistral



B7624002  
Jonquille



B7624003  
Garance