

## B7627007 ZELINA

The thin stripes in two-tone silk taffeta are delicately highlighted by black thread. This fabric, which recalls AUGUSTINE through its rustle and hang, is ideal for elegant curtain lining with majestic designs.

### B7627007 - Lilas



Raccord : Horizontal 1 cm / 0.39 inch



Laize : 136,00 cm / 53,54 inch

### Braquenié

<b>TYPE</b>	-
<b>USE</b>	Curtain
<b>COMPOSITION</b>	100 % Silk
<b>SALES UNIT</b>	Available per meter/yard
<b>WIDTH</b>	136 cm / 53,54 inch
<b>REPEAT</b>	H: 1 cm - 0,39 inch
<b>WEIGHT</b>	131 gr / ml

**CARE** 

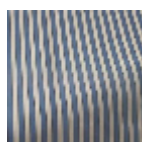
**INFORMATION** Stripes parallel to selvages  
silk taffeta

**BOOK** B99791904  
B99791903

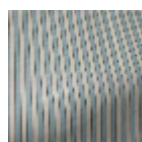
## 7 Colors



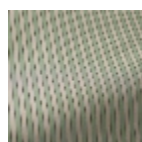
B7627001  
Ocre



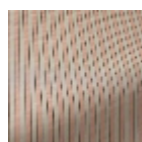
B7627002  
Azur



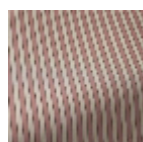
B7627003  
Ciel



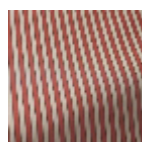
B7627005  
Amande



B7627006  
Pétale



B7627007  
Lilas



B7627009  
Coquelicot