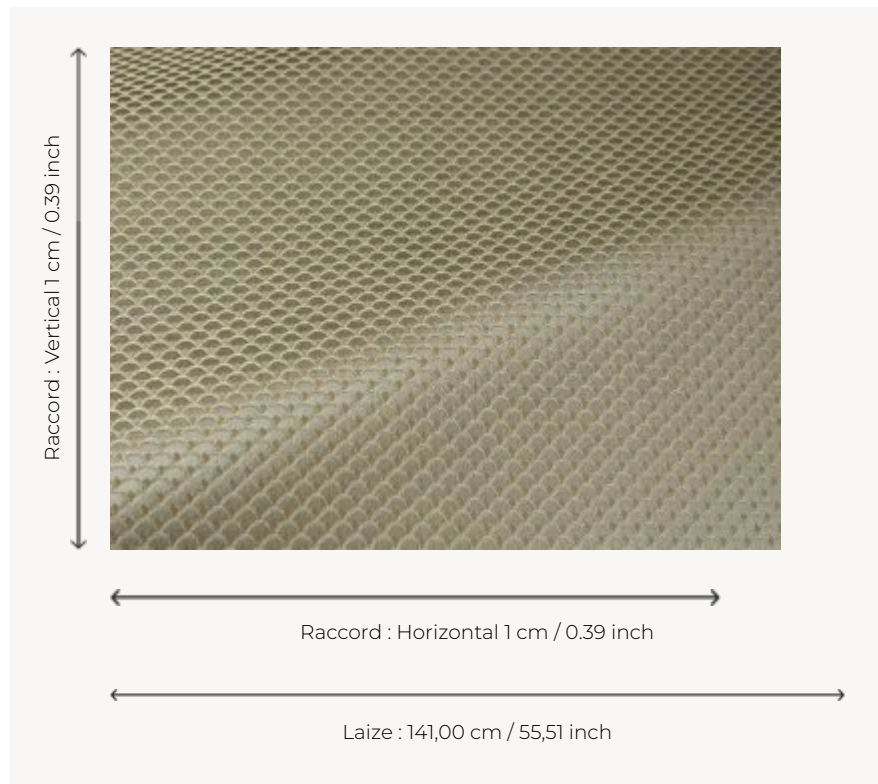


## B7637002 OKINAWA

Japanese-inspired tone-on-tone fabric for seating or curtains.

### B7637002 - Cumin



### Braquenié

<b>TYPE</b>	Jacquards
<b>USE</b>	Normal use
<b>MARTINDALE</b>	20.000 T
<b>COMPOSITION</b>	36 % Nylon - 34 % Viscose - 30 % Linen
<b>SALES UNIT</b>	Available per meter/yard
<b>WIDTH</b>	141 cm / 55,51 inch
<b>REPEAT</b>	H: 1 cm - 0,39 inch V: 1 cm - 0,39 inch
<b>WEIGHT</b>	479 gr / ml
<b>CARE</b>	
<b>CERTIFICATIONS</b>	BS5852 Cigarette test
<b>BOOK</b>	B99791902

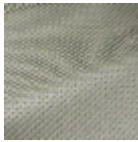
# 12 Colors



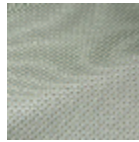
B7637001  
Perle



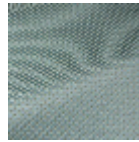
B7637002  
Cumin



B7637003  
Plume



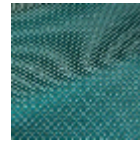
B7637004  
Opaline



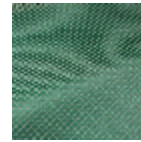
B7637005  
Céleste



B7637006  
Saphir



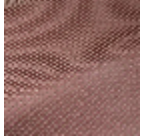
B7637007  
Emeraude



B7637008  
Malachite



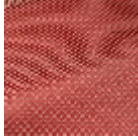
B7637009  
Curry



B7637010  
Lilas



B7637011  
Hortensia



B7637012  
Rubis