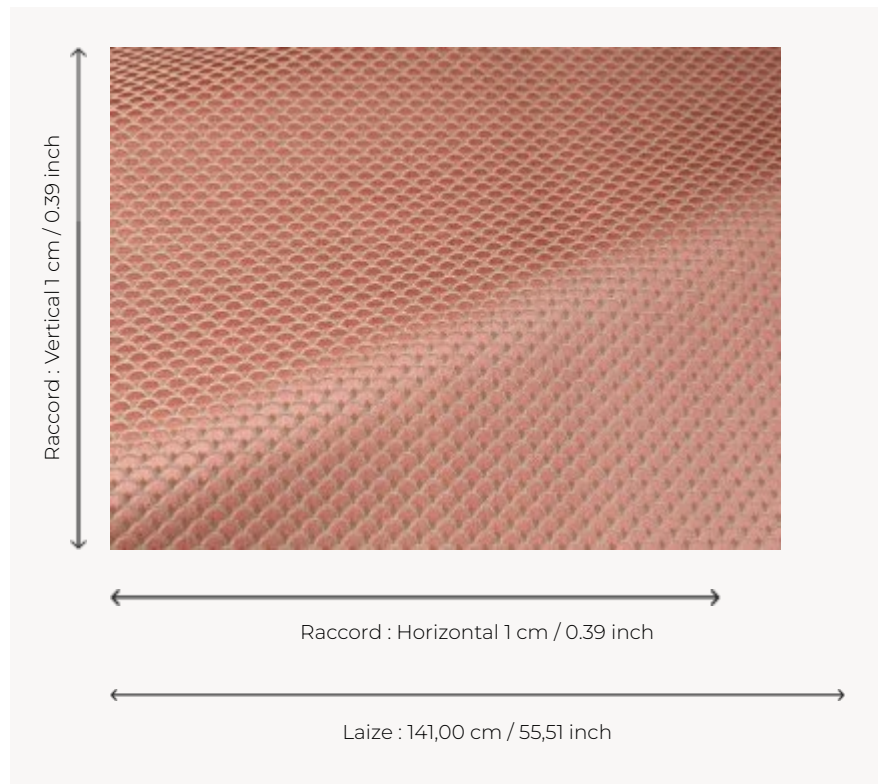


B7637011 OKINAWA

Japanese-inspired tone-on-tone fabric for seating or curtains.

B7637011 - Hortensia



Braquenié

TYPE	Jacquards
USE	Normal use
MARTINDALE	20.000 T
COMPOSITION	36 % Nylon - 34 % Viscose - 30 % Linen
SALES UNIT	Available per meter/yard
WIDTH	141 cm / 55,51 inch
REPEAT	H: 1 cm - 0,39 inch V: 1 cm - 0,39 inch
WEIGHT	479 gr / ml
CARE	
CERTIFICATIONS	BS5852 Cigarette test
BOOK	B99791902

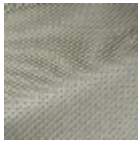
12 Colors



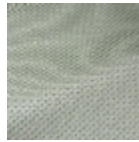
B7637001
Perle



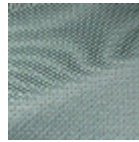
B7637002
Cumin



B7637003
Plume



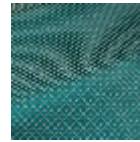
B7637004
Opaline



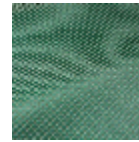
B7637005
Céleste



B7637006
Saphir



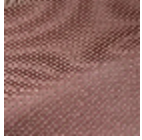
B7637007
Emeraude



B7637008
Malachite



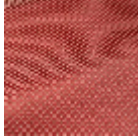
B7637009
Curry



B7637010
Lilas



B7637011
Hortensia



B7637012
Rubis