

## B7640001 ALIZON

Openwork velvet with a beautiful pattern of flowering branches and pineapple. It reproduces a textile from the Musée de la Toile de Jouy known as "Pineapple". Printed on a wooden board circa 1777, it was originally used for furniture.

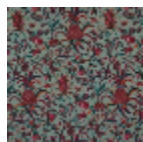
### B7640001 - Canard



### Braquenié

<b>PERFORMANCE</b>	High Rub Test
<b>TYPE</b>	Epinglé velvets
<b>USE</b>	Moderate use
<b>MARTINDALE</b>	50.000 T
<b>COMPOSITION</b>	78 % Linen - 11 % Polyester - 11 % Cotton
<b>SALES UNIT</b>	Available per meter/yard
<b>WIDTH</b>	135 cm / 53,14 inch
<b>REPEAT</b>	H: 67 cm - 26,37 inch V: 93 cm - 36,61 inch Straight repeat
<b>WEIGHT</b>	1080 gr / ml
<b>CARE</b>	
<b>CERTIFICATIONS</b>	BS5852 Cigarette & match test in conjunction with suitable combustion modified foam
<b>INFORMATION</b>	pile 100% linen
<b>BOOK</b>	B99791902

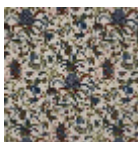
## 3 Colors



B7640001  
Canard



B7640002  
Colza



B7640003  
Epinard