

B7641001 ARISTOTE

Geometric épinglé velvet that evokes the fashionable motifs of the late 18th century.

B7641001 - Caraibes



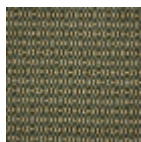
Braquenié

PERFORMANCE	Martindale > 25 000 T
TYPE	Epinglé velvets
USE	Intensive use
MARTINDALE	>100.000 T
COMPOSITION	91 % Cotton - 9 % Polyester
SALES UNIT	Available per meter/yard
WIDTH	136 cm / 53,54 inch
REPEAT	H: 8 cm - 3,14 inch V: 17 cm - 6,69 inch Straight repeat
WEIGHT	1060 gr / ml
CARE	
CERTIFICATIONS	BS5852 Cigarette test BS5852 Cigarette & match test BS5852 Match test
BOOK	B99791902

3 Colors



B7641001
Caraibes



B7641002
Argile



B7641003
Goyave