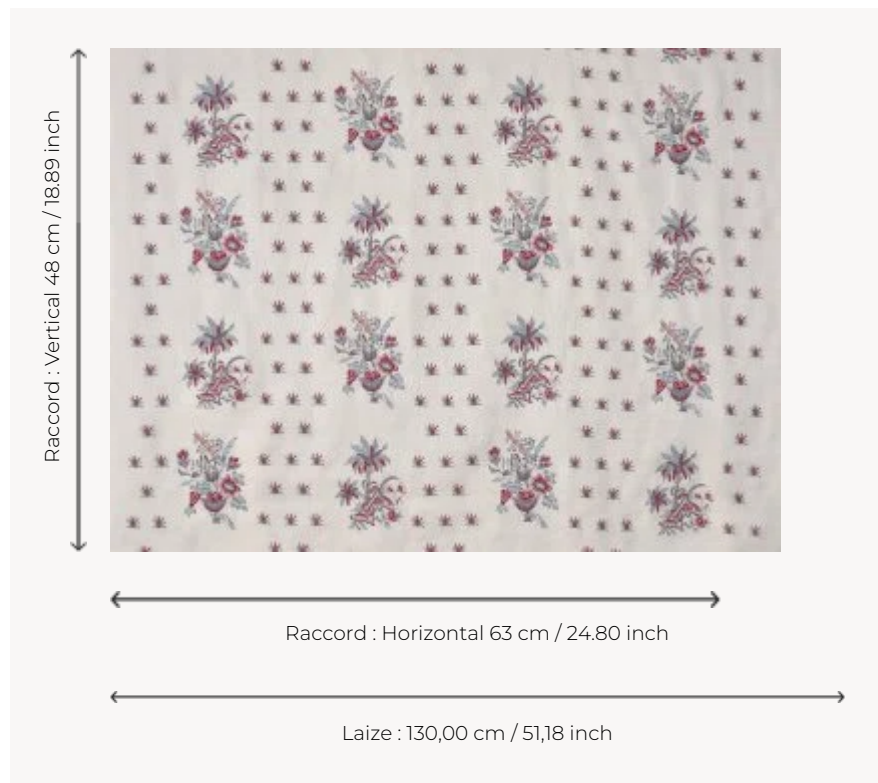


B7659001 COULONGES

This embroidery is a reinterpretation of a canvas printed in France with the block printing technique in the last quarter of the 18th century. Inspired by floral indiennes, the original document is preserved in the company's archives. This delicate design of palm trees and flowers is finely embroidered on a magnificent linen twill. Also available in a semi-coordinated version, COULONGES CONTREFOND B7660, as well as a wall covering.

B7659001 - Hortensia



Braquenié

TYPE	Embroideries
COMPOSITION	75 % Linen - 18 % Viscose - 7 % Polyester
SALES UNIT	Available per meter/yard
WIDTH	130 cm / 51,18 inch
REPEAT	H: 63 cm - 24,80 inch V: 48 cm - 18,89 inch Straight repeat
WEIGHT	312 gr / ml
CARE	

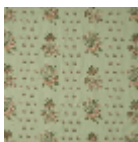
3 Colors



B7659001
Hortensia



B7659002
Mandarine



B7659003
Amande