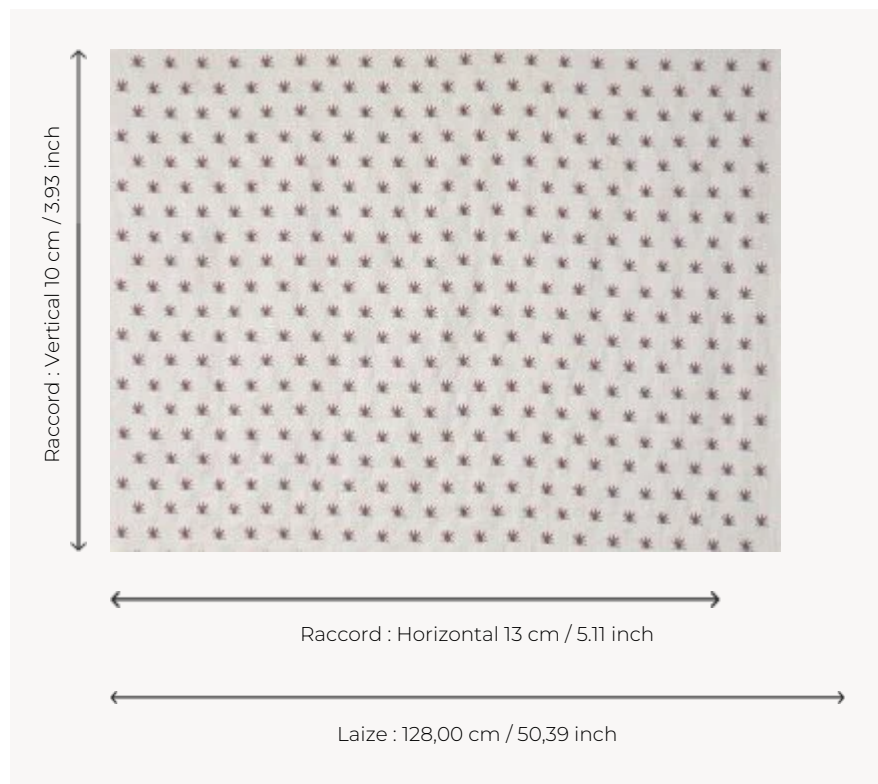


## B7660001 COULONGES CONTREFOND

Inspired by 18th century Indian designs, this delicate sowing of exotic plants is finely embroidered on a magnificent linen twill. It is perfectly coordinated with the COULONGES B7659 fabric, as well as the wall covering of the same name. It reproduces a canvas printed in France with the block printing technique in the last quarter of the 18th century, preserved in the Maison's archives.

### B7660001 - Hortensia



### Braquenié

<b>TYPE</b>	Embroideries
<b>COMPOSITION</b>	80 % Linen - 14 % Viscose - 6 % Polyester
<b>SALES UNIT</b>	Available per meter/yard
<b>WIDTH</b>	128 cm / 50,39 inch
<b>REPEAT</b>	H: 13 cm - 5,11 inch V: 10 cm - 3,93 inch Straight repeat
<b>WEIGHT</b>	320 gr / ml
<b>CARE</b>	
<b>BOOK</b>	B99791906

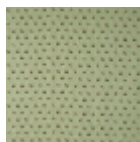
### 3 Colors



B7660001  
Hortensia



B7660002  
Mandarine



B7660003  
Amandine