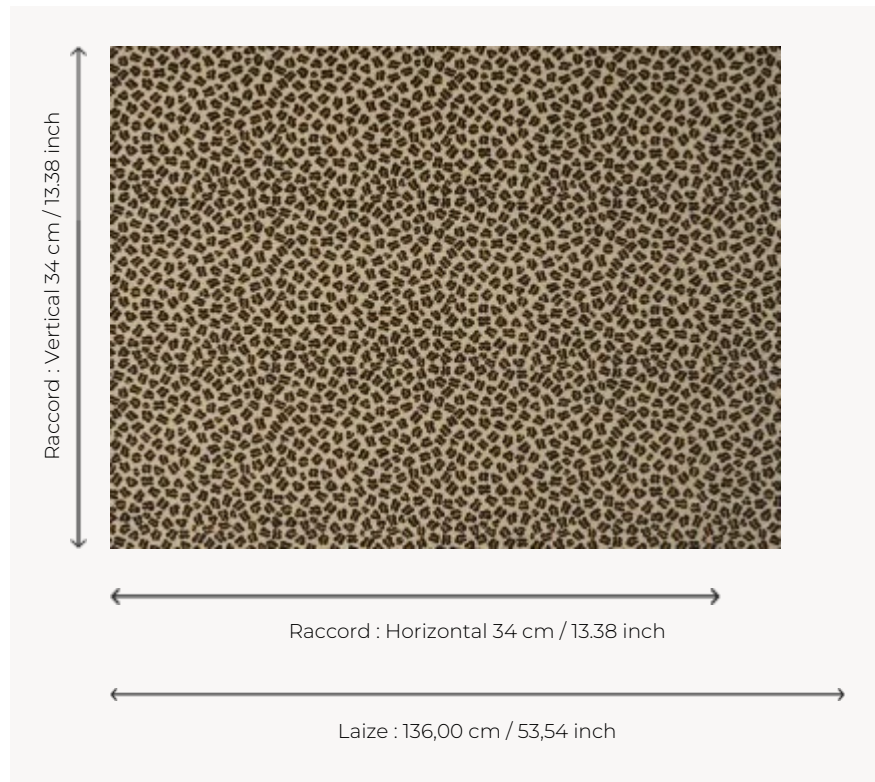


B7662001 MONTCEL

A reinterpretation of an archive document from the collections of the Musée de la Toile de Jouy, this leopard print comes from a cotton twill printed with the block printing technique after 1806 by the Manufacture Royale d'Oberkampf, in Jouy-en-Josas. It was used in 1816 in the billiard room of the château du Montcel, which was occupied by the descendants of the famous manufacturer. This charming design, some parts of which were missing, has been completed, slightly enlarged, and comes back to life today in a quality of chiseled velvet, woven on a 19th century perforated cardboard loom. The density of its loops and cotton pile, as well as its warm and timeless hues, make it an ideal fabric.

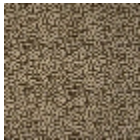
B7662001 - Jaguar



Braquenié

PERFORMANCE	High Rub Test
TYPE	Epinglé velvets
COLLABORATION	Musée de la Toile de Jouy
USE	Intensive use
MARTINDALE	>100.000 T
COMPOSITION	86 % Cotton - 14 % Polyester
SALES UNIT	Available per meter/yard
WIDTH	136 cm / 53,54 inch
REPEAT	H: 34 cm - 13,38 inch V: 34 cm - 13,38 inch Straight repeat
WEIGHT	884 gr / ml
CARE	
CERTIFICATIONS	EN1021-1-2 in conjunction with suitable combustion modified foam NFPA 260-Class 1
INFORMATION	pile 100% cotton
BOOK	B99791907

5 Colors



B7662001
Jaguar



B7662002
Icare



B7662003
Ciel



B7662004
Groseille



B7662005
Jungle