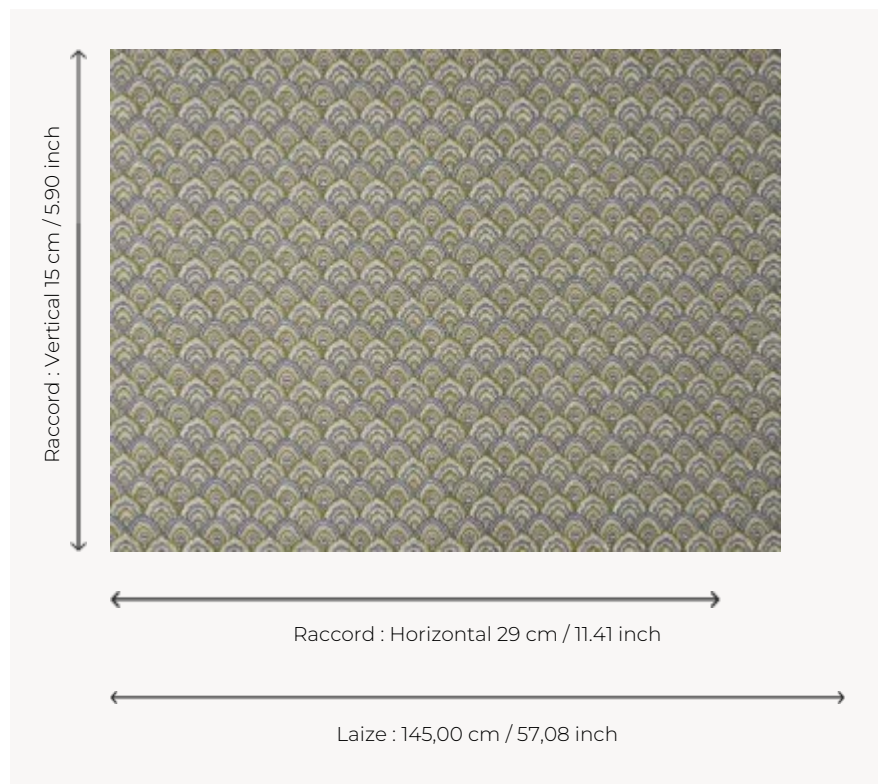


B7672004 FLEURY

A large scale pattern that reproduces the detail of the base of a Kalemkar from the Maison archives, FLEURY is a remarkable jacquard with its beautiful linen weave and its thread crossings that allow for subtle plays on color. Its soft shades coordinate perfectly with the other fabrics in the Braquenié collection.

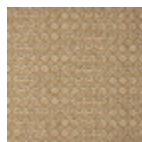
B7672004 - Grandes eaux



Braquenié

TYPE	Jacquards
USE	Moderate use
MARTINDALE	10.000 T
COMPOSITION	38 % Polyamide - 32 % Linen - 25 % Cotton - 5 % Polyester
SALES UNIT	Available per meter/yard
WIDTH	145 cm / 57,08 inch
REPEAT	H: 29 cm - 11,41 inch V: 15 cm - 5,90 inch Straight repeat
WEIGHT	580 gr / ml
CARE	
CERTIFICATIONS	BS5852 Cigarette test EN1021-1-2 in conjunction with suitable combustion modified foam NFPA 260-Class 1
BOOK	B99791907

4 Colors



B7672001
Macarons



B7672002
Bleu garance



B7672003
Rosiers



B7672004
Grandes eaux