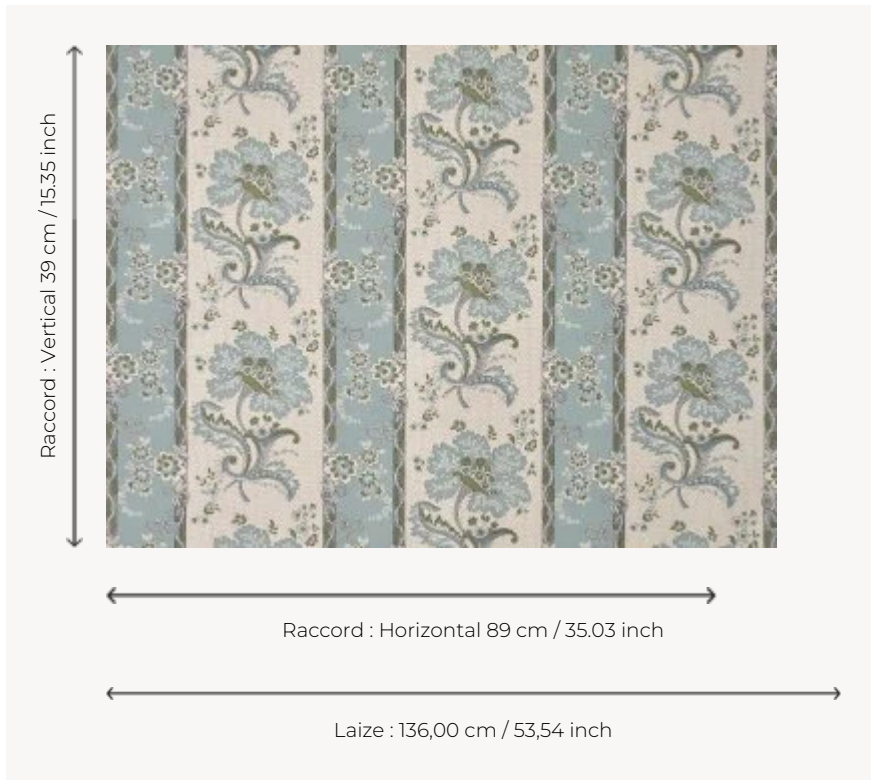


B7682002 AMBOISE

Reproduction of « La corne fleurie » pattern, one of Beautiran's best known motifs, printed with the block printing technique at the Leclerc & fils factory in the late 18th century. The document, preserved in the Maison's archives, is a padded and quilted part of a bed à la duchesse. This charming stripe of flowers and ribbons is here flat screen printed in France, on a timeless metis support.

B7682002 - Ciel



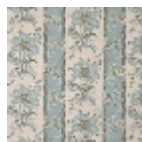
Braquenié

TYPE	Prints
COMPOSITION	70 % Linen - 30 % Cotton
SALES UNIT	Available per meter/yard
WIDTH	136 cm / 53,54 inch
REPEAT	H: 89 cm - 35,03 inch V: 39 cm - 15,35 inch Half drop repeat
WEIGHT	428 gr / ml
CARE	
NOTES	Made in France (EPV Living Heritage Mill)
INFORMATION	Flat screen printed

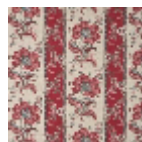
3 Colors



B7682001
Ocre



B7682002
Ciel



B7682003
Garance