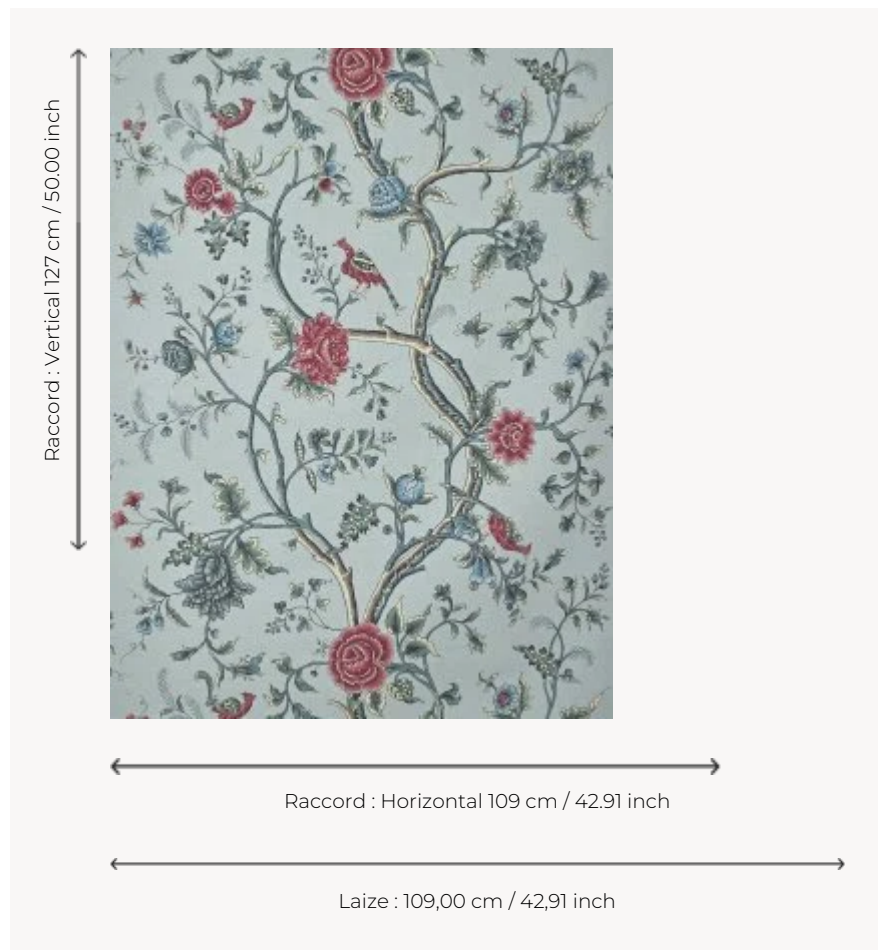


B7695002 CALICUT

Very beautiful print inspired by the Indian trees of life of the 18th century, in a continuous composition on a metis support.

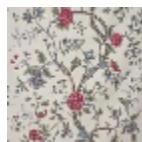
B7695002 - Ciel



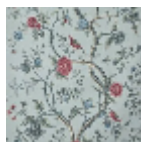
Braquenié

TYPE	Prints
COMPOSITION	67 % Linen - 33 % Cotton
SALES UNIT	Available per meter/yard
WIDTH	109 cm / 42,91 inch
REPEAT	H: 109 cm - 42,91 inch V: 127 cm - 50,00 inch Half drop repeat
WEIGHT	250 gr / ml
CARE	
NOTES	Made in France (EPV Living Heritage Mill)

2 Colors



B7695001
Document



B7695002
Ciel