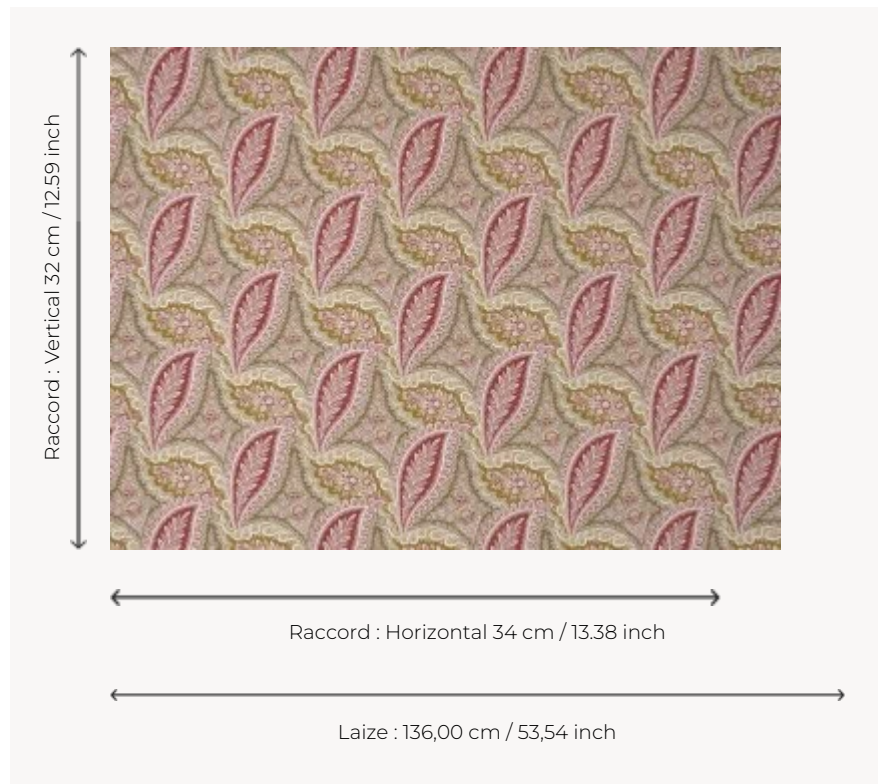


## B7696002 KERALA

With its bold scale, this beautiful cashmere print deploys warm and luminous shades on metis.

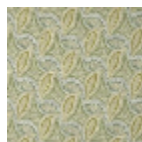
### B7696002 - Ocre



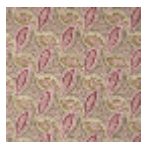
### Braquenié

<b>TYPE</b>	Prints
<b>COMPOSITION</b>	57 % Linen - 43 % Cotton
<b>SALES UNIT</b>	Available per meter/yard
<b>WIDTH</b>	136 cm / 53,54 inch
<b>REPEAT</b>	H: 34 cm - 13,38 inch V: 32 cm - 12,59 inch Straight repeat
<b>WEIGHT</b>	285 gr / ml
<b>CARE</b>	
<b>NOTES</b>	Made in France (EPV Living Heritage Mill)
<b>BOOK</b>	B99791905

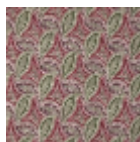
## 3 Colors



B7696001  
Jeunes  
pousses



B7696002  
Ocre



B7696003  
kerala prune