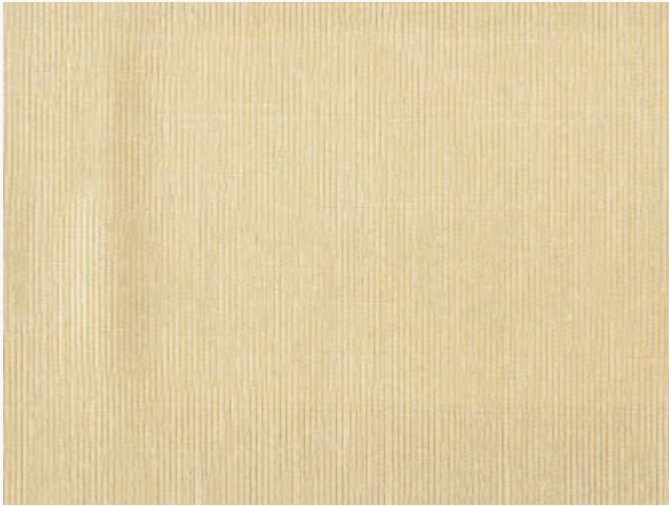


## F2230212 MOIRE PRINCESSE II

The moire, classic and elegant material par excellence, is the result of crushing a wet and folded fabric by calendering. The crushed weft is slightly altered and gives an undulating effect by reflection of light on the crushed sides. Several effects are possible depending on how the fabric is folded.

### F2230212 - Raphia

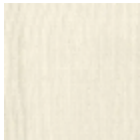


Laize : 145,00 cm / 57,08 inch

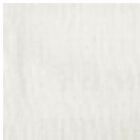
### Pierre Frey

<b>TYPE</b>	Plains
<b>COMPOSITION</b>	41 % Cotton - 27 % Linen - 18 % Viscose - 14 % Polyester
<b>SALES UNIT</b>	Available per meter/yard
<b>WIDTH</b>	145 cm / 57,08 inch
<b>WEIGHT</b>	379 gr / ml
<b>CARE</b>	
<b>NOTES</b>	Can be embossed

4 Colors



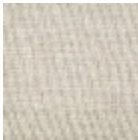
F2230005  
Crème



F2230033  
Écru



F2230212  
Raphia



F2230264  
Belette