

## F2569004 PETIT PARC

Reproduction of a painted canvas from the Louis XVI period, showing a motif of birds and baskets of flowers in a network of knotted ribbons. The choice of a half-breed support and the trompe-l'oeil worn effects accentuate the similarity with the 18th century model painted on linen canvas.

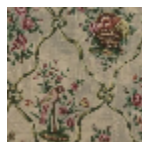
### F2569004 - Gris



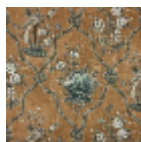
### Pierre Frey

<b>TYPE</b>	Prints
<b>COMPOSITION</b>	53 % Cotton - 47 % Linen
<b>SALES UNIT</b>	Available per meter/yard
<b>WIDTH</b>	145 cm / 57,08 inch
<b>REPEAT</b>	V: 78 cm - 30,70 inch
<b>WEIGHT</b>	430 gr / ml
<b>CARE</b>	

## 2 Colors



F2569003  
Vert



F2569004  
Gris