

F2798001 BAKOU

Epinglé velvet with quite a simple geometric motif. The range of colours give it an ethnic or contemporary appearance.

F2798001 - Naturel



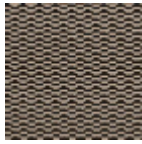
Pierre Frey

PERFORMANCE	Martindale > 25 000 T
TYPE	Epinglé velvets
USE	Intensive use
MARTINDALE	> 40.000 T
COMPOSITION	100 % Cotton
SALES UNIT	Available per meter/yard
WIDTH	136 cm / 53,54 inch
REPEAT	H: 7 cm - 2,75 inch V: 3 cm - 1,18 inch
WEIGHT	958 gr / ml
CARE	
CERTIFICATIONS	BS5852 Cigarette test in conjunction with suitable combustion modified foam
BOOK	F9979212019 F99791106

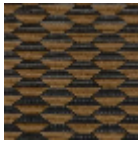
9 Colors



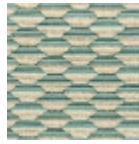
F2798001
Naturel



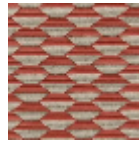
F2798002
Noir



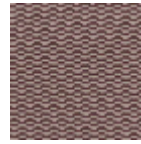
F2798003
Moka



F2798005
Céladon



F2798006
Rouge



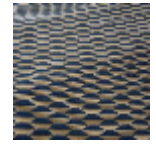
F2798007
Prune



F2798008
Or



F2798009
Olive



F2798010
Indigo