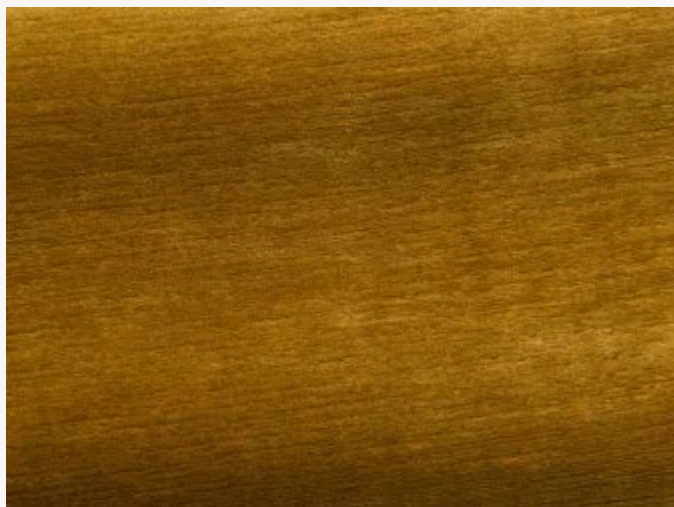




F2982013 GEORGES

Utilized since ancient times, linen is the natural fiber par excellence. Antibacterial by nature, it is a strong fiber that can be easily dyed. Often used as a toile or a damask, it reveals all its beauty as a velvet. It is the main reason to why we wanted to revisit this timeless fabric present in our collection since the 50s. It blends in both classical and modern interiors, and it is a fundamental to lovers of Beautiful. The fabric acquires patina with time, thus playing wonderfully with the reflection of light, presenting matt and gloss effects. The touch of the fabric is both rough and soft at the same time due to the intrinsic characteristics of the linen.

F2982013 - Bronze



Laize : 131,00 cm / 51,57 inch

Pierre Frey

PERFORMANCE	High Rub Test
TYPE	-
USE	Intensive use
MARTINDALE	50.000 T
COMPOSITION	55 % Cotton - 45 % Linen
SALES UNIT	Available per meter/yard
WIDTH	131 cm / 51,57 inch
WEIGHT	812 gr / ml
CARE	
CERTIFICATIONS	EN1021-1-2 in conjunction with suitable combustion modified foam NFPA 260-Class 1
NOTES	Can be embossed
INFORMATION	pile 100% linen
BOOK	F99791407

38 Colors



F2982000
Neige



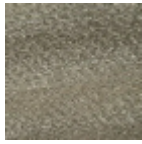
F2982001
Champagne



F2982002
Naturel



F2982003
Nuage



F2982004
Etain



F2982005
Zinc



F2982006
Ardoise



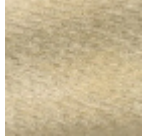
F2982007
Anthracite



F2982008
Beige



F2982009
Chamois



F2982010
Sable



F2982011
Miel



F2982012
Bouton d'or



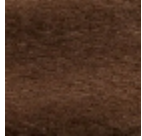
F2982013
Bronze



F2982014
Caramel



F2982015
Chocolat



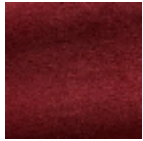
F2982016
Noisette



F2982017
Renard



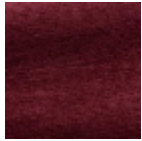
F2982018
Corail



F2982019
Rouge



F2982020
Cerise



F2982021
Bordeaux



F2982022
Prune



F2982023
Lilas



F2982024
Plume



F2982025
Poudre



F2982026
Vieux rose



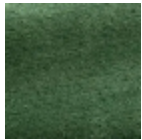
F2982027
Absinthe



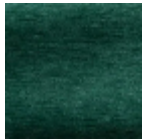
F2982028
Amande



F2982029
Jade



F2982030
Empire



F2982031
Emeraude



F2982032
Céladon



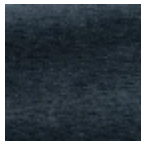
F2982033
Canard



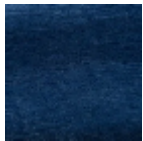
F2982034
Opaline



F2982035
Prusse



F2982036
Navy



F2982037
Saphir