



F3064001 MANIALA

Maniala is a sheer, woven in relief to catch the light which gives a sophisticated effect. Trevira CS polyester fiber.

F3064001 - Blanc



Laize : 320,00 cm / 125,98 inch

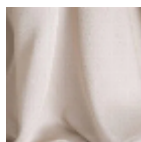
Pierre Frey

| | |
|-----------------------|------------------------------------|
| PERFORMANCE | Trevira CS |
| TYPE | Sheers |
| USE | Sheers |
| COMPOSITION | 100 % Polyester Fire Retardant |
| SALES UNIT | Available per meter/yard |
| WIDTH | 320 cm / 125,98 inch |
| WEIGHT | 224 gr / ml |
| CARE | |
| CERTIFICATIONS | Fire retardant M1 |
| NOTES | Flame retardant Leaded selvedge |
| BOOK | F9979212007 |

2 Colors



F3064001
Blanc



F3064002
Lin