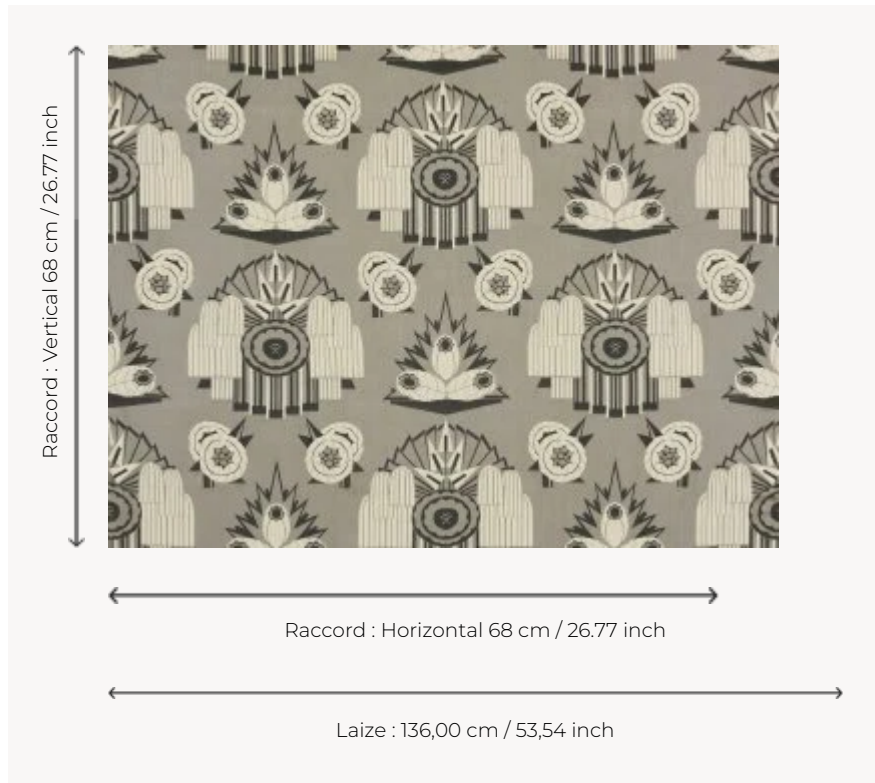


## F3094001 LA FEE ELECTRICITE

In 1923, René Prou, Patrick Frey's grandfather, created this pattern for the House of Le Manach. It is characteristic of the enthusiasm for the science of electricity during the period. This craze reached a paroxysm in 1937 with the building of the light and electricity pavilion by Mallet Stevens for the International Exhibition of Arts and Technology in Modern Life. The technique of double-weave jacquard and the black and cream threads create as many contrasts in colors and materials as they do in patterns to express the singular personality of this historical motif.

### F3094001 - Truffe



### Pierre Frey

<b>TYPE</b>	Jacquards
<b>COMPOSITION</b>	59 % Cotton - 35 % Viscose - 6 % Polyamide
<b>SALES UNIT</b>	Available per meter/yard
<b>WIDTH</b>	136 cm / 53,54 inch
<b>REPEAT</b>	H: 68 cm - 26,77 inch V: 68 cm - 26,77 inch
<b>WEIGHT</b>	685 gr / ml
<b>CARE</b>	
<b>NOTES</b>	Woven in Pierre Frey's workshop in northern France. Living Heritage Mill.
<b>BOOK</b>	F99791601

1 Colors



F3094001  
Truffe