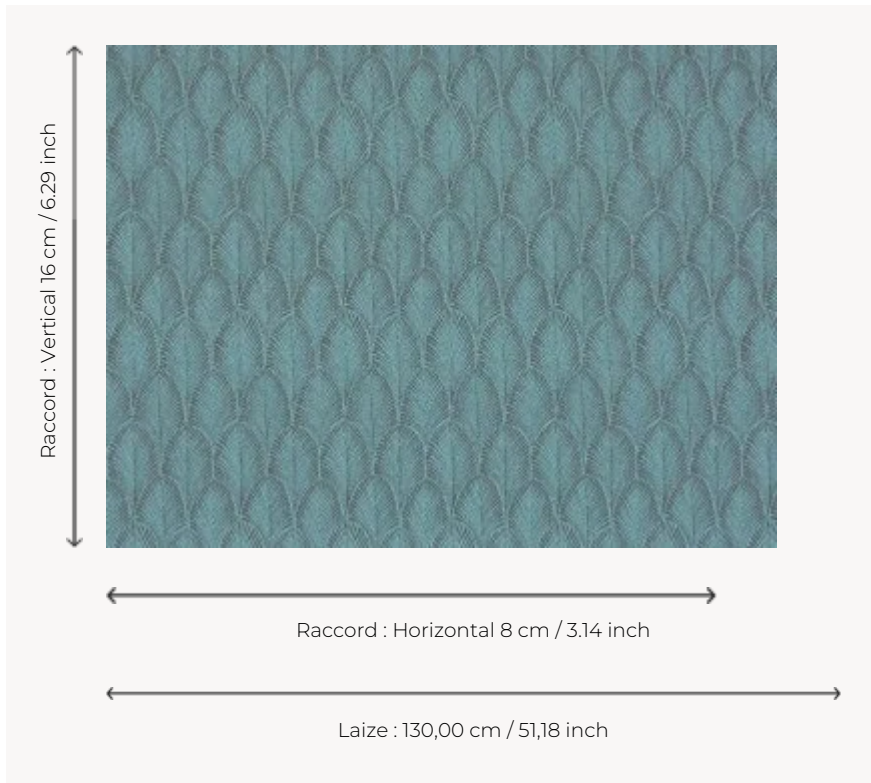


F3095006 PALMETTE

This Trevira CS jacquard in refined colors presents an all-over pattern of iridescent palm leaves. It echoes the marvelous dresses of the twenties. With an eye to meeting the fire safety requirements of certain markets, Maison Pierre Frey offers several models in the Charleston collection that are woven with high-quality, flame-resistant polyester fibers and threads.

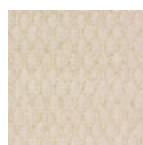
F3095006 - Fjord



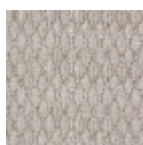
Pierre Frey

PERFORMANCE	Trevira CS
TYPE	Jacquards
USE	Intensive use
MARTINDALE	25.000 T
COMPOSITION	100 % Polyester Fire Retardant
SALES UNIT	Available per meter/yard
WIDTH	130 cm / 51,18 inch
REPEAT	H: 8 cm - 3,14 inch V: 16 cm - 6,29 inch
WEIGHT	455 gr / ml
CARE	
CERTIFICATIONS	BS5852 Cigarette & match test Fire retardant M1 NFPA 260-Class 1 CAL TB 117- Pass
NOTES	Reversible Flame retardant
BOOK	F99791601 F99791604

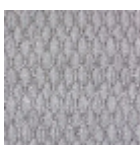
5 Colors



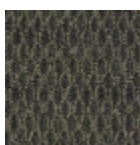
F3095001
Poudre



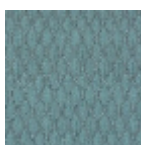
F3095002
Raphia



F3095003
Galet



F3095004
Corbeau



F3095006
Fjord