

F3128011 CRAFT

A sublime fabric in heavy linen, the 'Craft' model features all the sophistication expected from this exceptional material in a 'vintage' treatment for a stylishly bohemian look. Available in a broad range of powdery shades, it adds a touch of pastel color that blends perfectly into a subtle decorative scheme. The fabric also plays on contrast. The irregular linen treads add verve and a distinctive style. But it is also supple and comfortable thanks to a 'stonewashed' treatment that gives it a patina and softens its movement. Exceptional hold, stability and remarkable hand and drape: this linen has all the advantages and is equally beautiful as curtains or for seating. Since the fabric is piece-dyed, then faded, we cannot guarantee absolute matching from one color bath to another.

F3128011 - Mimosa



Laize : 130,00 cm / 51,18 inch

Pierre Frey

| | |
|----------------|---|
| PERFORMANCE | High Rub Test |
| TYPE | Plains |
| USE | Moderate use |
| MARTINDALE | 30.000 T |
| COMPOSITION | 90 % Linen - 10 % Polyamide |
| SALES UNIT | Available per meter/yard |
| WIDTH | 130 cm / 51,18 inch |
| WEIGHT | 639 gr / ml |
| CARE | |
| CERTIFICATIONS | EN1021-1-2 in conjunction with suitable combustion modified foam NFPA 260-Class 1 |
| INFORMATION | Stonewashed look, cutting for approval recommended |
| BOOK | F99791611 |

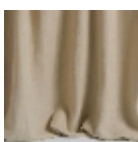
31 Colors



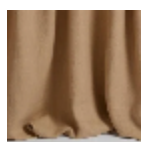
F3128001
Coton



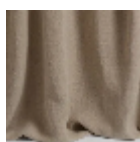
F3128002
Meringue



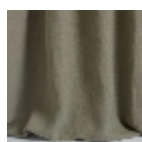
F3128003
Sable



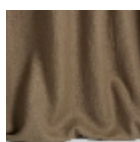
F3128004
Savane



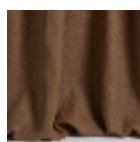
F3128005
Lin



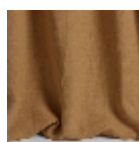
F3128006
Taupe



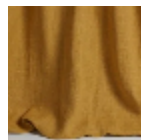
F3128007
Ecorces



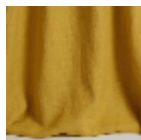
F3128008
Cannelle



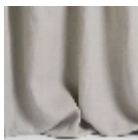
F3128009
Camel



F3128010
Curcuma



F3128011
Mimosa



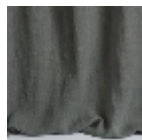
F3128012
Perle



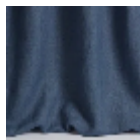
F3128013
Souris



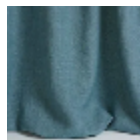
F3128014
Étain



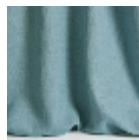
F3128015
Ardoise



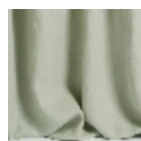
F3128016
Indigo



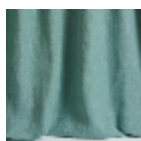
F3128017
Orage



F3128018
Ciel



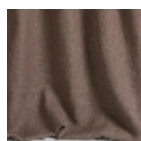
F3128019
Opaline



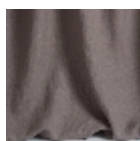
F3128020
Céladon



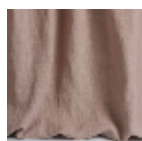
F3128021
Amande



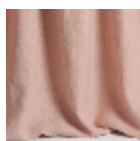
F3128022
Chardon



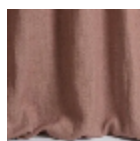
F3128023
Glycine



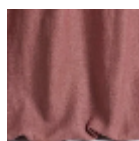
F3128024
Poudre



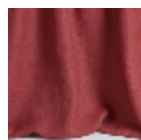
F3128025
Pétale



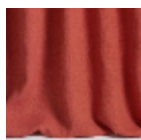
F3128026
Rose ancien



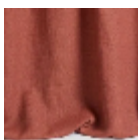
F3128027
Orchidée



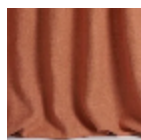
F3128028
Pourpre



F3128029
Corail



F3128030
Brique



F3128031
Abricot