

## F3128031 CRAFT

A sublime fabric in heavy linen, the 'Craft' model features all the sophistication expected from this exceptional material in a 'vintage' treatment for a stylishly bohemian look. Available in a broad range of powdery shades, it adds a touch of pastel color that blends perfectly into a subtle decorative scheme. The fabric also plays on contrast. The irregular linen treads add verve and a distinctive style. But it is also supple and comfortable thanks to a 'stonewashed' treatment that gives it a patina and softens its movement. Exceptional hold, stability and remarkable hand and drape: this linen has all the advantages and is equally beautiful as curtains or for seating. Since the fabric is piece-dyed, then faded, we cannot guarantee absolute matching from one color bath to another.

### F3128031 - Abricot



Laize : 130,00 cm / 51,18 inch

### Pierre Frey

PERFORMANCE	High Rub Test
TYPE	Plains
USE	Moderate use
MARTINDALE	30.000 T
COMPOSITION	90 % Linen - 10 % Polyamide
SALES UNIT	Available per meter/yard
WIDTH	130 cm / 51,18 inch
WEIGHT	639 gr / ml
CARE	
CERTIFICATIONS	EN1021-1-2 in conjunction with suitable combustion modified foam NFPA 260-Class 1
INFORMATION	Stonewashed look, cutting for approval recommended
BOOK	F99791611

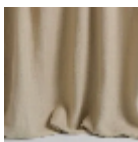
## 31 Colors



F3128001  
Coton



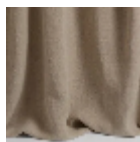
F3128002  
Meringue



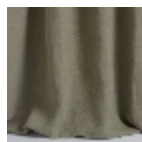
F3128003  
Sable



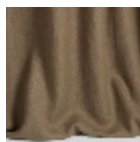
F3128004  
Savane



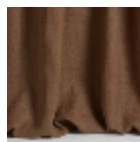
F3128005  
Lin



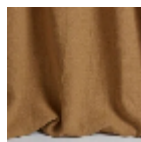
F3128006  
Taupe



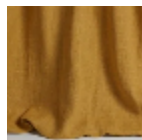
F3128007  
Ecorces



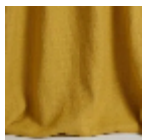
F3128008  
Cannelle



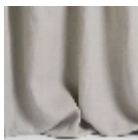
F3128009  
Camel



F3128010  
Curcuma



F3128011  
Mimosa



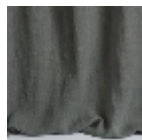
F3128012  
Perle



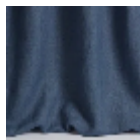
F3128013  
Souris



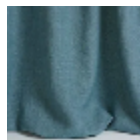
F3128014  
Étain



F3128015  
Ardoise



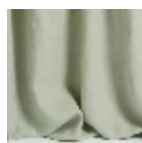
F3128016  
Indigo



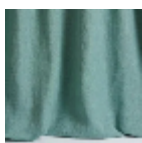
F3128017  
Orage



F3128018  
Ciel



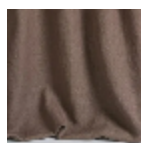
F3128019  
Opaline



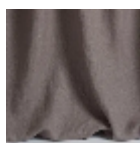
F3128020  
Céladon



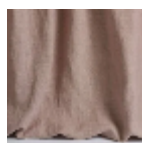
F3128021  
Amande



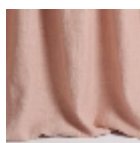
F3128022  
Chardon



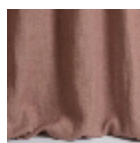
F3128023  
Glycine



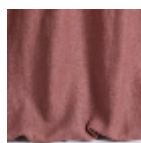
F3128024  
Poudre



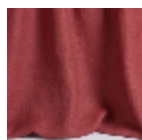
F3128025  
Pétale



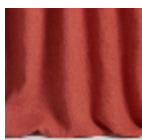
F3128026  
Rose ancien



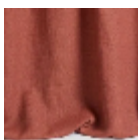
F3128027  
Orchidée



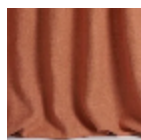
F3128028  
Pourpre



F3128029  
Corail



F3128030  
Brique



F3128031  
Abricot