



## F3210023 FINE

India Mahdavi creates a collection for Pierre Frey that focuses on velvet, a favorite material invented in Kashmir and known as "swansdown". It was first used in Iran and later imported to Europe. FINE is a very delicate plain cotton velvet with an impeccable hand and a Martindale number that allows using it to cover seats.

### F3210023 - Lily



Laize : 140,00 cm / 55,11 inch

### Pierre Frey

<b>PERFORMANCE</b>	Martindale > 25 000 T
<b>TYPE</b>	Plains - Velvets
<b>ARTIST</b>	India Mahdavi
<b>COLLABORATION</b>	Pour PIERRE FREY
<b>USE</b>	Moderate use
<b>MARTINDALE</b>	40.000 T
<b>COMPOSITION</b>	100 % Cotton
<b>SALES UNIT</b>	Available per meter/yard
<b>WIDTH</b>	140 cm / 55,11 inch
<b>WEIGHT</b>	420 gr / ml
<b>CARE</b>	
<b>CERTIFICATIONS</b>	BS5852 Cigarette test NFPA 260-Class 1
<b>NOTES</b>	Can be embossed
<b>INFORMATION</b>	pile 100% cotton
<b>BOOK</b>	F99791710

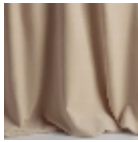
# 31 Colors



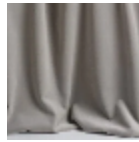
F3210001  
Nuage



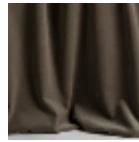
F3210002  
Plâtre



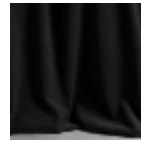
F3210003  
Dune



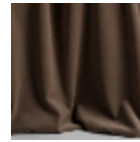
F3210004  
Fog



F3210005  
Dark clay



F3210006  
Simple black



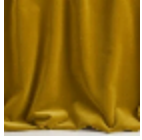
F3210007  
Woods



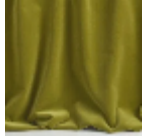
F3210008  
Havane



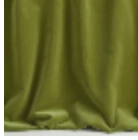
F3210009  
Dijon



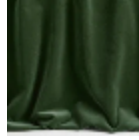
F3210010  
Safran



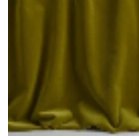
F3210011  
Lime green



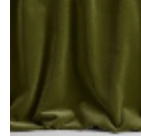
F3210012  
Granny



F3210013  
Sapin



F3210014  
Fougère



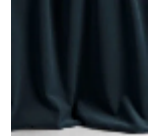
F3210015  
Kiwi



F3210016  
Céladon



F3210017  
Duck



F3210018  
Méditerranée



F3210019  
Deep sky



F3210020  
Lapis lazuli



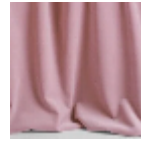
F3210021  
God save the  
queen



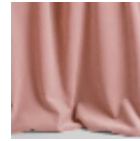
F3210023  
Lily



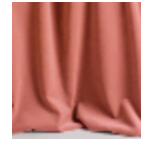
F3210024  
Piggy



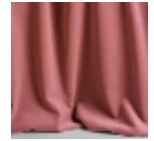
F3210025  
Sketch



F3210026  
Powder



F3210027  
Papaye



F3210028  
Pêche



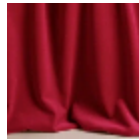
F3210029  
Terracotta



F3210030  
Fire



F3210031  
Wine



F3210032  
In love