

F3231001 LA SMALA

Embroidered on linen, LA SMALA portrays native american in their characteristic headdresses, postures and clothing. Raised embroidery accentuates the modeling of these fictitious characters. This fabric is the result of a collaboration with the students of the National School of Decorative Arts in Paris.

F3231001

Raccord : Vertical 115 cm / 45.27 inch



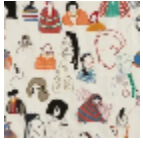
Raccord : Horizontal 126 cm / 49.60 inch

Laize : 126,00 cm / 49,60 inch

Pierre Frey

TYPE	Prints - Embroideries
ARTIST	Noémie Vallerand & Carine Prache
USE	Curtain
COMPOSITION	76 % Polyamide - 10 % Wool - 8 % Polyester - 6 % Viscose
SALES UNIT	Available per meter/yard
WIDTH	126 cm - 49,60 inch
REPEAT	H : 126 cm - 49.60 inch V : 115 cm - 45.27 inch Straight repeat
WEIGHT	415 gr / m ²
CARE	
NOTES	Handcrafted embroidery
BOOK	F99791802

1 Colors



F3231001
Multicolore