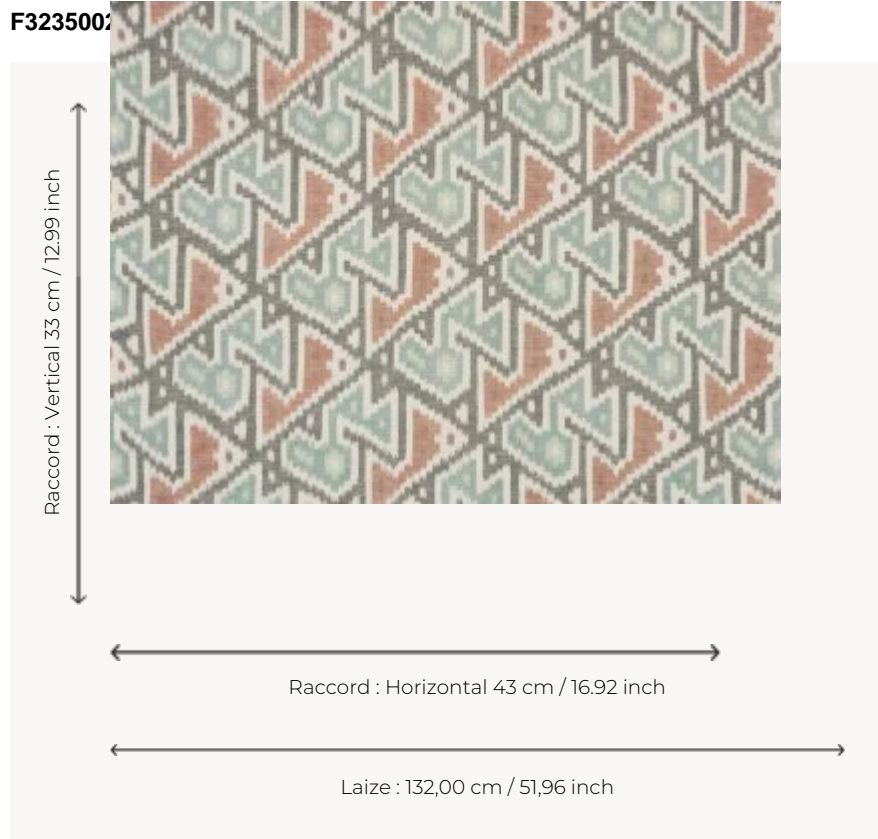


## F3235002 ALABAMA

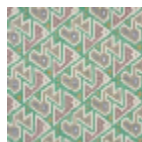
This very beautiful warp print on a background with irregular threads transcribes the handcrafted work of Native American women.



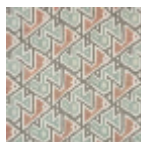
### Pierre Frey

<b>TYPE</b>	Prints
<b>USE</b>	SM
<b>MARTINDALE</b>	20.000 T
<b>COMPOSITION</b>	100 % Cotton
<b>SALES UNIT</b>	Available per meter/yard
<b>WIDTH</b>	132 cm - 51,96 inch
<b>REPEAT</b>	H : 43 cm - 16.92 inch V : 33 cm - 12.99 inch Straight repeat
<b>WEIGHT</b>	488 gr / ml
<b>CARE</b>	
<b>NOTES</b>	Hand woven
<b>INFORMATION</b>	Natural fiber irregularity Hand screen printed
<b>BOOK</b>	F99791802

## 3 Colors



F3235001  
Mint



F3235002  
Minéral



F3235003  
Terracotta