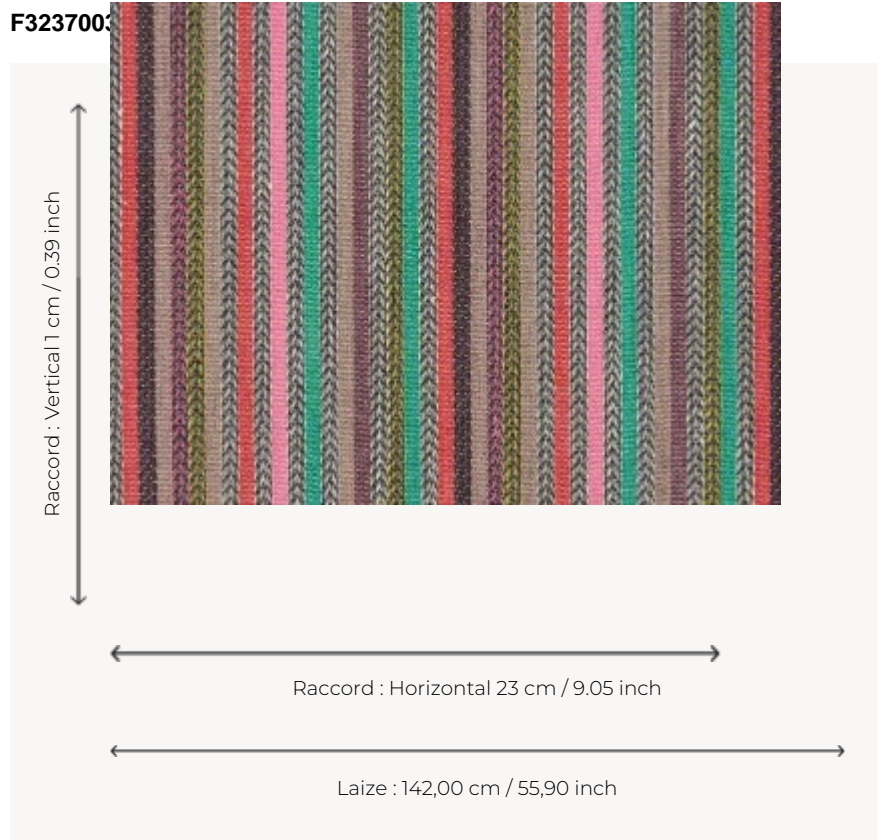


## F3237003 LOUISIANE

Narrow stripe alternating chevrons and colored bands in a traditional spirit.



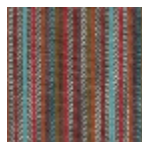
### Pierre Frey

<b>TYPE</b>	Jacquards
<b>USE</b>	SN
<b>MARTINDALE</b>	16.000 T
<b>COMPOSITION</b>	70 % Cotton - 30 % Jute
<b>SALES UNIT</b>	Available per meter/yard
<b>WIDTH</b>	142 cm - 55,90 inch
<b>REPEAT</b>	H : 23 cm - 9.05 inch V : 11 cm - 0.39 inch Free match
<b>WEIGHT</b>	710 gr / ml
<b>CARE</b>	

**INFORMATION** Reinforced stitching recommended to avoid fraying at seams

**BOOK** F99791802

## 2 Colors



F3237001  
Canyon



F3237003  
Botanica