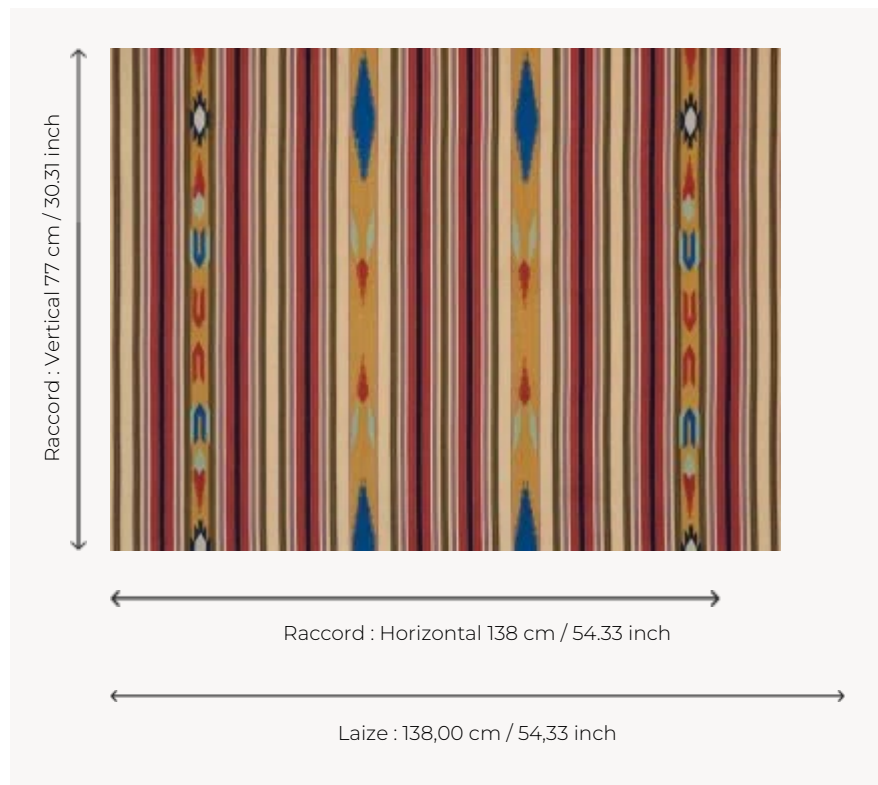


## F3238001 ARIZONA

This multicolored stripe, which has been woven and re-embroidered in certain areas, reproduces an old textile kept in our archives.

### F3238001 - Sable rose



### Pierre Frey

<b>TYPE</b>	Embroideries
<b>USE</b>	Curtain
<b>COMPOSITION</b>	75 % Cotton - 22 % Polyester - 3 % metallised yarn Lurex
<b>SALES UNIT</b>	Available per meter/yard
<b>WIDTH</b>	138 cm / 54,33 inch
<b>REPEAT</b>	H: 138 cm - 54,33 inch V: 77 cm - 30,31 inch Straight repeat
<b>WEIGHT</b>	455 gr / ml
<b>CARE</b>	
<b>NOTES</b>	Handcrafted embroidery
<b>INFORMATION</b>	Stripes parallel to selvages
<b>BOOK</b>	F99791802

# 1 Colors



F3238001  
Sable rose