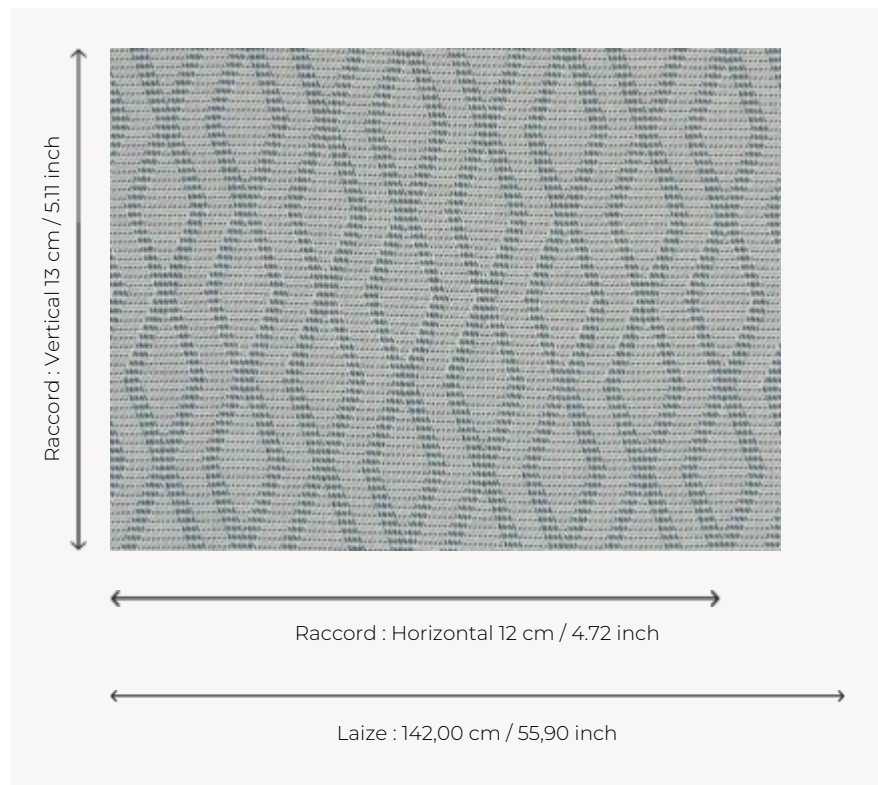


## F3262004 MAUPITI

Line and graphics are featured in this weave with a crossbar pattern. The subtle interplay of colors adds a very decorative touch to this indoor/outdoor jacquard.

### F3262004 - Marin



### Pierre Frey

<b>TYPE</b>	Jacquards
<b>USE</b>	Intensive use
<b>MARTINDALE</b>	35.000 T
<b>COMPOSITION</b>	100 % Acrylic Dralon
<b>SALES UNIT</b>	Available per meter/yard
<b>WIDTH</b>	142 cm / 55,90 inch
<b>REPEAT</b>	H: 12 cm - 4,72 inch V: 13 cm - 5,11 inch Straight repeat
<b>WEIGHT</b>	795 gr / ml
<b>CARE</b>	

**CERTIFICATIONS** NFPA 260-Class 1

**NOTES** High lightfastness, mold-resistant, stain & water repellent  
Woven in Pierre Frey's workshop in northern France. Living Heritage Mill.  
Stain & water repellent

**INFORMATION** Reinforced stitching recommended to avoid fraying at seams  
For outdoor use, make sure to use appropriate lining materials.  
Remember to store pads and cushions in a clean, dry place when not in use.

**BOOK** F99791806

## 6 Colors



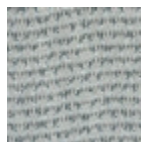
F3262001  
Corail



F3262002  
Citrus



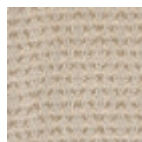
F3262003  
Jardin



F3262004  
Marin



F3262005  
Figue



F3262006  
Coco