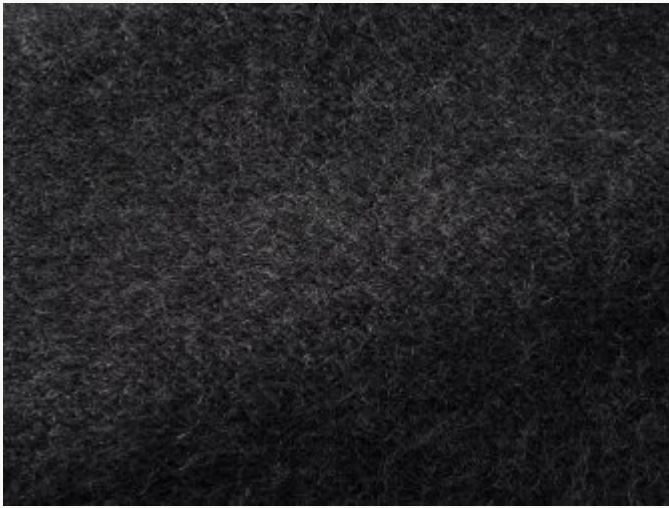




# F3290005 YETI

This very beautiful plain weave of wool, mohair and long-haired alpaca has been created in a reworked seventies spirit and woven in the Pierre Frey workshops in northern France.

## F3290005 - Bagheera

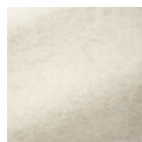


Laize : 127,00 cm / 50,00 inch

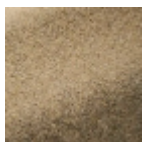
## Pierre Frey

TYPE	Fibres douces - Hairy fabrics - Plains
USE	Moderate use
MARTINDALE	20.000 T
COMPOSITION	61 % Wool - 15 % Mohair - 14 % Alpaca - 10 % Polyamide
SALES UNIT	Available per meter/yard
WIDTH	127 cm / 50,00 inch
WEIGHT	508 gr / ml
CARE	
CERTIFICATIONS	BS5852 Cigarette & match test in conjunction with suitable combustion modified foam EN1021-1-2 in conjunction with suitable combustion modified foam NFPA 260-Class 1 CAL TB 117- Pass CRIB 5
NOTES	Reversible Woven in Pierre Frey's workshop in northern France.Living Heritage Mill.
INFORMATION	Patina with use Reinforced stitching recommended to avoid fraying at seams

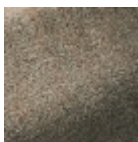
# 12 Colors



F3290001  
Coton



F3290002  
Quinoa



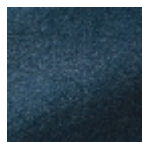
F3290003  
Hérisson



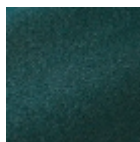
F3290004  
Loft



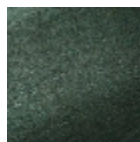
F3290005  
Bagheera



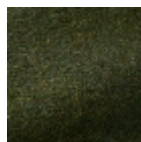
F3290006  
Encre



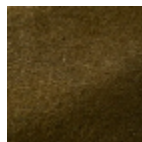
F3290007  
Paon



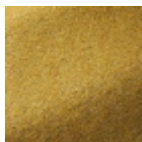
F3290008  
Ciboulée



F3290009  
Sous bois



F3290010  
Olive



F3290011  
Honey



F3290014  
Orang outan