


F3383003 JULIETTE

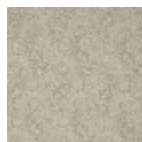
Gilles & Boissier's 'Les trois sœurs' capsule collection for Pierre Frey. A jacquard fabric with cashmere patterns, made of wool, inspired by an Egyptian shawl. Brought back from Egypt, Napoleon I offered these precious fabrics to Josephine. That's all it takes to ignite the fashion trend for these patterns. French weavers and printers then reproduce these exotic designs and highlight the mastery of their know-how. Dorothée Boissier reinterprets, for Maison Pierre Frey, the archival model of a cashmere fabric reminiscent of a turquoise hanging that covered the walls of her childhood desk, both masculine and with a Persian flavour.



Pierre Frey

TYPE	Jacquards
ARTIST	Gilles & Boissier
USE	Moderate use
MARTINDALE	10.000 T
COMPOSITION	76 % Wool - 24 % Cotton
SALES UNIT	Available per meter/yard
WIDTH	129 cm - 50,78 inch
REPEAT	H : 32 cm - 12.59 inch V : 53 cm - 20.86 inch Straight repeat
WEIGHT	696 gr / m ²
CARE	
CERTIFICATIONS	BS5852 Cigarette & match test EN1021-1-2 in conjunction with suitable combustion modified foam NFPA 260-Class 1
NOTES	Woven in Pierre Frey's workshop in northern France.Living Heritage Mill.
INFORMATION	Patina with use

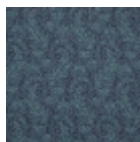
3 Colors



F3383001
Agra



F3383002
Nicobar



F3383003
Cochin