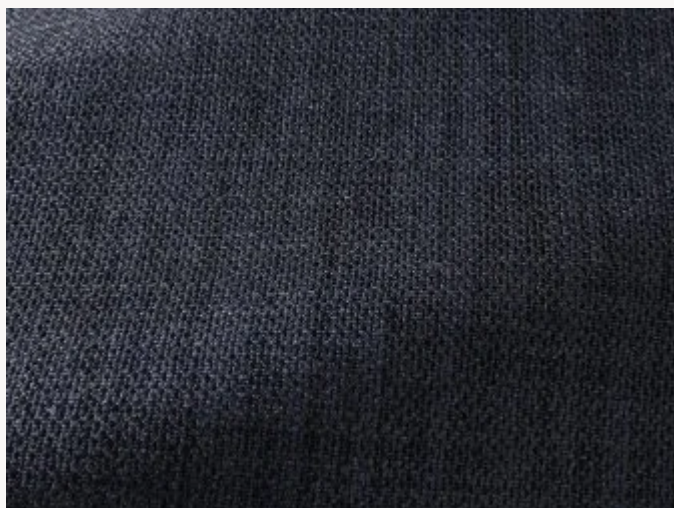




## F3441010 PAMPELUNE

A warm chenille velvet with an elegant changing appearance on the face side, PAMPELUNE is semi-plain on the reverse side, contrasting with its matt and irregular appearance.

### F3441010 - Nuit



Laize : 140,00 cm / 55,11 inch

### Pierre Frey

<b>PERFORMANCE</b>	Martindale > 25 000 T
<b>TYPE</b>	Chenille - Fibres douces - Plains
<b>USE</b>	Intensive use
<b>MARTINDALE</b>	>100.000 T
<b>COMPOSITION</b>	51 % Viscose - 35 % Acrylic - 10 % Cotton - 4 % Polyester
<b>SALES UNIT</b>	Available per meter/yard
<b>WIDTH</b>	140 cm / 55,11 inch
<b>WEIGHT</b>	1470 gr / ml
<b>CARE</b>	
<b>CERTIFICATIONS</b>	BS5852 Cigarette test BS5852 Cigarette & match test BS5852 Match test EN1021-1-2 in conjunction with suitable combustion modified foam NFPA 260-Class 1
<b>NOTES</b>	Reversible
<b>INFORMATION</b>	Patina with use
<b>BOOK</b>	F9979202003

# 24 Colors



F3441001  
Blanc



F3441002  
Flocon



F3441003  
Perle



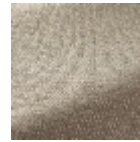
F3441004  
Orge



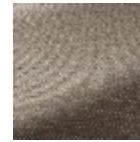
F3441005  
Caillou



F3441006  
Elephant



F3441007  
Moka



F3441008  
Taupe



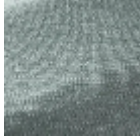
F3441009  
Brun



F3441010  
Nuit



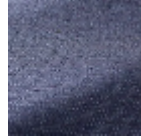
F3441011  
Souris



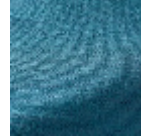
F3441012  
Aqua



F3441013  
Ming



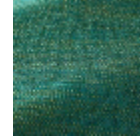
F3441014  
Indigo



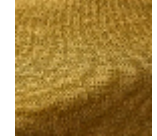
F3441015  
Bleuets



F3441016  
Turquoise



F3441017  
Malachite



F3441018  
Mousse



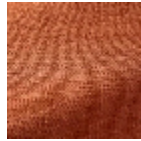
F3441019  
Nenuphar



F3441020  
Pourpre



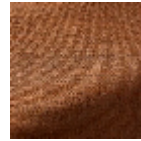
F3441021  
Garance



F3441022  
Capucine



F3441023  
Souci



F3441024  
Acajou