

F3441023 PAMPELUNE

A warm chenille velvet with an elegant changing appearance on the face side, PAMPELUNE is semi-plain on the reverse side, contrasting with its matt and irregular appearance.

F3441023 - Souci



Laize : 140,00 cm / 55,11 inch

Pierre Frey

PERFORMANCE	Martindale > 25 000 T
TYPE	Chenille - Fibres douces - Plains
USE	Intensive use
MARTINDALE	>100.000 T
COMPOSITION	51 % Viscose - 35 % Acrylic - 10 % Cotton - 4 % Polyester
SALES UNIT	Available per meter/yard
WIDTH	140 cm / 55,11 inch
WEIGHT	1470 gr / ml
CARE	
CERTIFICATIONS	BS5852 Cigarette test BS5852 Cigarette & match test BS5852 Match test EN1021-1-2 in conjunction with suitable combustion modified foam NFPA 260-Class 1
NOTES	Reversible
INFORMATION	Patina with use
BOOK	F9979202003

24 Colors



F3441001
Blanc



F3441002
Flocon



F3441003
Perle



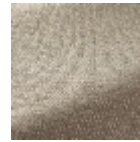
F3441004
Orge



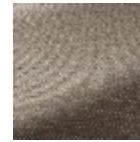
F3441005
Caillou



F3441006
Elephant



F3441007
Moka



F3441008
Taupe



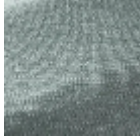
F3441009
Brun



F3441010
Nuit



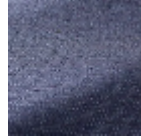
F3441011
Souris



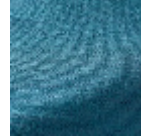
F3441012
Aqua



F3441013
Ming



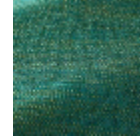
F3441014
Indigo



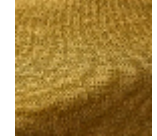
F3441015
Bleuet



F3441016
Turquoise



F3441017
Malachite



F3441018
Mousse



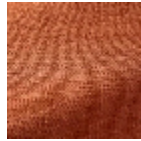
F3441019
Nenuphar



F3441020
Pourpre



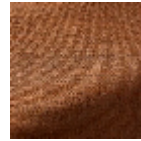
F3441021
Garance



F3441022
Capucine



F3441023
Souci



F3441024
Acajou