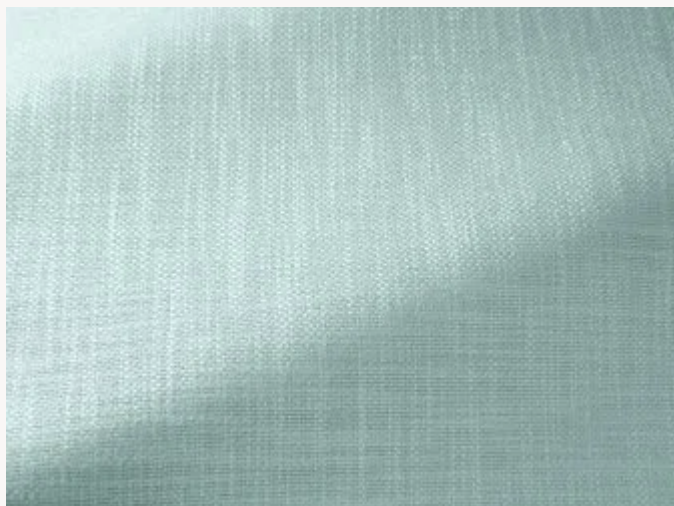




F3474041 BIARRITZ

Both modern and timeless, this plain is characterised by its linen look, its braided structure and its glossy finish. Its dense hand, its beautiful fall and its solidity make Biarritz an essential part of the decoration, perfect for use as seat and curtain. It is available in a wide range of luminous and greedy colours.

F3474041 - Glacier



Laize : 138,00 cm / 54,33 inch

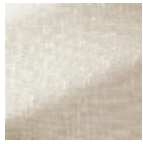
Pierre Frey

| | |
|-----------------------|--|
| PERFORMANCE | Martindale > 25 000 T |
| TYPE | Plains |
| USE | Intensive use |
| MARTINDALE | 40.000 T |
| COMPOSITION | 60 % Viscose - 29 % Cotton - 11 % Linen |
| SALES UNIT | Available per meter/yard |
| WIDTH | 138 cm / 54,33 inch |
| WEIGHT | 828 gr / ml |
| CARE | |
| CERTIFICATIONS | BS5852 Cigarette test NFPA 260-Class 1 |
| NOTES | Chintz finish with a glaze aspect Can be embossed |
| BOOK | F9979202009 F9979202009MINI |

27 Colors



F3474001
Perce-neige



F3474002
Ecrú



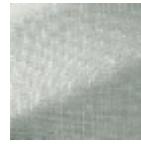
F3474003
Calcaire



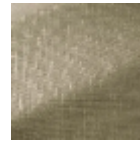
F3474005
Sable



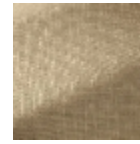
F3474006
Tourterelle



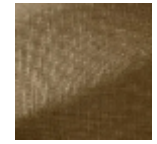
F3474007
Souris



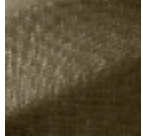
F3474008
Taupe



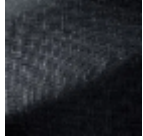
F3474009
Parchemin



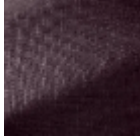
F3474010
Chêne



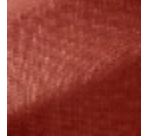
F3474011
Tortue



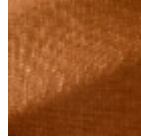
F3474013
Suie



F3474014
Vigne



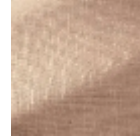
F3474017
Sanguine



F3474019
Caramel



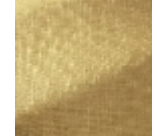
F3474020
Blush



F3474021
Poudre



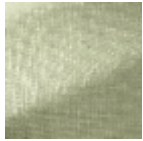
F3474026
Tournesol



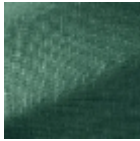
F3474027
Canari



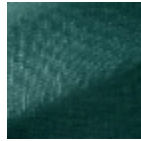
F3474028
Crème



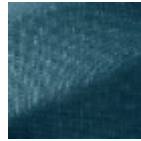
F3474031
Amande



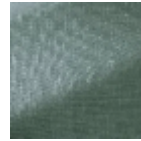
F3474034
Bouteille



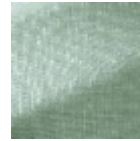
F3474035
Canard



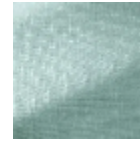
F3474037
Ocean



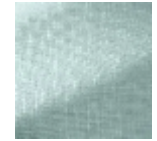
F3474038
Orange



F3474039
Celadon



F3474040
Ciel



F3474041
Glacier